



B E L I E V E

2007

PASSIONE CELESTE

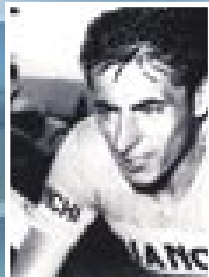
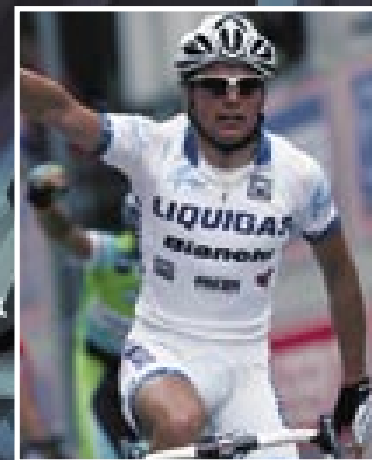
TECNOLOGIA VINCENTE



Bianchi

HISTORY

Cars, motorcycles and bicycles. Bianchi's experience is unlimited. Nowadays as well as the past races of champions, the brand with the royal eagle as its badge belongs to the history of Italy. Everything started in 1885 in Via Nirone, in Milan, Italy when *Edoardo Bianchi*, launched himself into his entrepreneurial adventure, deciding to open a **machine shop** with the money he had earned as an apprentice. Italy then was about to experience an industrial boom. Bicycles were in the founder's blood but growth and popularity came later together with the first vehicles equipped with an engine: first with three wheels, then four and again with two. In the twenties Bianchi's production was complete and encompassed cars, motorcycles and bicycles, all popular and appreciated around the world. Those years were rich in creativity and innovation. Champions like *Costante Girardengo* and *Gaetano "Tano" Belloni* raced and won in the saddle of a Bianchi bicycle. So did Tazio Nuvolari, standing out on Bianchi motorcycles. Everywhere, the Celeste jerseys was synonymous with victory. Then WWII broke out: in August 1943 the factory buildings in Milan were bombed, 58 years had passed since the start of the factory. In 1946 Edoardo Bianchi passed away at the age of 79, the symbol of the rebirth was the 125 2T Bianchina motorcycle. During the following three years, Bianchi came back gradually to normal production



rhythms and as it was before the war, meantime in cycling the legendary Celeste jersey was on **Fausto Coppi's** shoulders, the hero, who conquers all the major races of that time, among which 5 Giro d'Italia, 2 Tour de France, one world championship and even one time-trial at Vigorelli velodrome in Milan in front of a delirious crowd. Then it was the turn of **Felice Gimondi**, the 'home' champion, the first to bring cycling back to the ancient splendour of Coppi's era. Gimondi even won the Tour de France on his debut (1965). Then continued with the Giro (1967) and the Vuelta (1968), then the Giro again (1969) up to the world triumph in Barcelona in 1973. In between many classic races and again the Giro d'Italia at the end of his career in 1976. His successor became *Moreno Argentin*, winner of several classic races: four Liège-Bastogne-Liège, Tour of Flanders and Flèche Wallonne (three times) and the striped rainbow jersey, the nicest of his victories, won in Colorado Spring. In more recent times other special wins came from champions like *Gianni Bugno*, *Mario Cipollini* and **Marco Pantani**, the "Pirate" who in 1998 did the prestigious double win of the Giro-Tour in the saddle of his Bianchi. The latest champion is **Danilo Di Luca** who, in his debut year in the saddle of this Celeste bike, gained the first edition of the ProTour, the point rankings as the best rider. **And history goes on.**

RANGE

Bianchi has no limits. Cycling is a complex sport: every approach has to be personal: light and fast on road, strong and reckless off-road or carefree during the long weekend outings. We have three categories **for road**: *HoC* (Hors Catégorie), *B4P* (Born for performance) and *C2C* (Coast to coast). For the first category, there are lightweight bicycles made for those who want to challenge the law of gravity, with racing geometries and no compromise. But if you want lightweight frames with less extreme geometries to throw at your challenges then you will like the B4P series, bicycles conceived to take you everywhere.

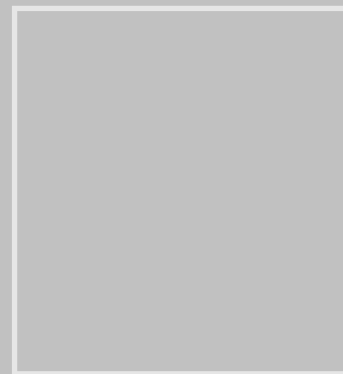
Maybe you like riding and riding, non-stop, from early morning to late evening and comfort for you is more important than performance, then C2C is the right choice for you: "more upright" geometries, designed less for ultimate aerodynamics and more for comfort in mind.

When time is against you the *Special* series is the right one for you: D2 Crono, D2 Pista and D2 Ciclocross enhance performances and provide the utmost reliability. "World" bikes. A special attention to women

design has been made: *Dama Bianca* is at the same time our history and also our present day. Compact geometries, with a wide range of models to achieve the best in performance, grit or comfort.

For off-road our **mountainbikes are** tough and designed for tough terrain. They are similar to each other but with important differences: *Racing*, *Performance*, *Leisure* and *Dirt*. Racing is conceived for the professional, with the utmost lightness and stiffness to enhance acceleration and handling. New aluminium alloys and new technical solutions, features that the current World and Olympic champion Julien Absalon appreciates a lot. If you are not obsessed with the ultimate weight of the frame but at the same time search for excellent performance then the Performance series is for you. Refined aluminium alloys, hydroforming technology and an appealing design, special features of a bicycle conceived to satisfy your cycling desires.

And again, Leisure, the pleasure to ride in search for fun, wherever you like, admiring the beauty of nature. And again, challenging the force of gravity with breathtaking tricks around the obstacles of the city, the magic of the Dirt series. Or if you are a true sportsman and like your bicycle yet use it as a **mean of transport**, the *Camaleonte* and *T-road* are both suitable for both the city and for those longer weekend trips.



NANO TECH

News at Bianchi and absolute state-of-the-art technology even compared to other industrial sectors. After months of research and repeated tests, our product engineers have found a solution to increasing the mechanical features of carbon (IM/UHM). By mixing special additives to the resins used to bind the carbon fibres together, it is possible to reach weights at the top of their respective product categories, yet maintaining the same dynamic performances consolidated from years of experience in the world of carbon.

STRUCTURAL FOAM INJECTION

Bianchi's exclusive patent of SFI technology year after year, by now perfected, continues to maintain its value unchanged, demonstrating its proven validity. The injection of a structural foam into the seat tube at the BB end improves the stress distribution in the more critical area of the frame, doubling the fatigue life of the same frame. A reason to boast for Bianchi today, a guarantee and reference for tomorrow, in light of the new and more restrictive European standards on the subject of fatigue strength.

HYPERALLOY

The exclusive Hyperalloy aluminium alloy, is derived from 7000 series, but with the addition of special zinc and magnesium alloys, makes it possible to obtain tensile strength features that are 50% higher than commercial aluminium alloys, and consequently affords an unbeatable specific strength ratio. By using the characteristics of this special alloy in the best way possible, our engineers are capable of designing some of the most performance orientated frames in the world, the only ones that can compare with the performance of carbon fibre frames.

▲ B A T ▼

The technologies available today in the cycling sector (hydro-forming and carbon fibres) open up new possibilities for our engineers. The frame becomes a three-dimensional object, and as such can start having different reactions to the different loads to which it is subjected. Bianchi Active Technology makes the most of this principle and allows us to obtain extremely stiff and performing frames under severe loads deriving from the pedal stroke but not as rigid under load coming from vibration due to irregularities and roughness of the terrain. This design philosophy allows for the creation of a new type of product, but most importantly lays the foundations so that in future every frame can be built based exactly on the performance that it has to guarantee.

HYDRO

A special plastic deformation technique for our tubesets, obtained by injecting a fluid at an extremely high pressure (1,200 bar), that frees the shapes of the aluminium and allows for frames with high stiffness values and captivating shapes, in addition it guarantees a greater dimensional check compared with traditional extrusion methods. With thicknesses being equal, the hydro-formed sections have much higher moments of inertia and allow a significant increase in the stiffness/weight ratio of the frames in the more critical areas.

CSS

A four bar linkage design like many others available on the market; but behind its construction lies a patent (Combined Suspension System), developed in collaboration with the Renault Formula One technicians, a patented system that only technical personnel can understand but that all riders can appreciate after just a few pedal strokes. The only system in the world that can split the stresses derived from pedalling from those of the rear shock, thus completely eliminating the bobbing phenomenon responsible for the dispersion of energy and allowing a suspension system that is always active regardless of the adjustment of the shock absorber. For long travel (Enduro), this patent also foresees the use of a floating rear brake caliper, which offers maximum braking performance even under the most extreme conditions.

> All information and all technical specifications are correct at time of press. Bianchi reserves the right to change them without prior warning. To further information, please see our web site. www.bianchi.com that it's always updated.

R

M

S

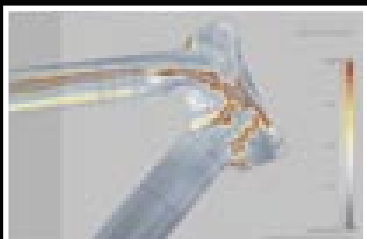
R

E

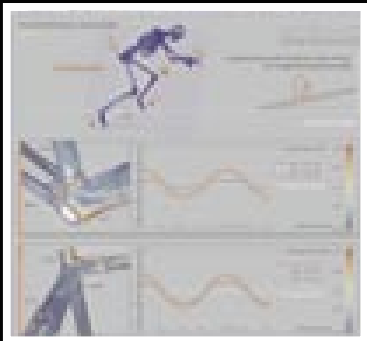
S

ROAD **HOC**
HORS CATEGORIE

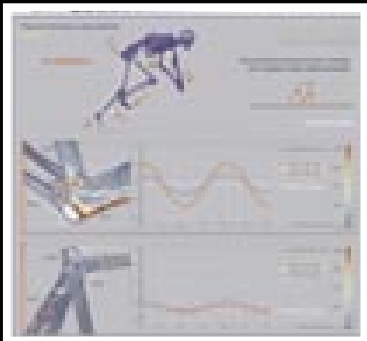




SL carbon headtube FEM analysis



Structural analysis while climbing



Structural analysis while sprinting

ROAD **HOC** HORS CATEGORIE

Hors Catégorie: in cycle racing these are the toughest climbs. Only champions can challenge and dominate them. The Hors Catégorie bikes have the same DNA as champions, the special signs that make the difference. Above all Extreme *lightness*, but also a lot of care for details in frames that do not like compromises and aim straight for performances. What counts more than anything else is pedalling, and fast at that. Two models: **928 Carbon SL** and **FG Lite Carbon**. With cutting edge design, the new **928 Carbon SL** is the result of a fine-tuned integration of structural parts. Each tube is designed and developed to fulfil the task assigned to it. The computer analysis of performances is fundamental for the construction model, as does *nanotechnology* employed within the carbon fibres. The *tubes* are not only *light*, but also incredibly *stiff*, with a 27% increase in their performance. This is an absolutely unbelievable figure if one thinks of the minimum margins allowed by this level of product.

The weight target for these frames is actually less than one kilogram, a value that belongs to the category of excellence.



A category in which we also find **FG Lite Carbon**, the riders' frame. The blades of the rear seat stays feature a new design, as does the head tube on the all-aluminium version, the same one used by Pro Tour champion Danilo Di Luca. The result? An unbeatable bicycle in terms of reaction and aptitude for competitions. The weight target is vital, and the FG Lite Carbon weighs less than 1 kg. The SL fork is completely renewed and stylized. Computer analysis of the stresses provides an important contribution in the design of the shape. The blades are now straight, for better *manoeuvrability* and *resistance to stresses*, the material is made of carbon fibre and nanotechnology. Exceptional weight target: the SL weighs only 300 g for a full length. Few other forks on the market can boast such a low weight.

R

E

N

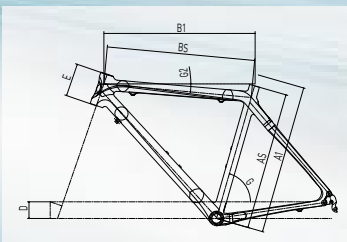
H-C

HORS CATEGORIE

928 CARBON SLRECORD 10 SP DOUBLE (Y7B21),
COLOUR ES

GROUP: CAMPAGNOLO RECORD
 CRANKSET: CAMPAGNOLO RECORD CARBON
 HANDLEBARS: ITM K-SWORD CARBON
 STEM: ITM K-SWORD CARBON
 SEATPOST: ITM K-SWORD CARBON
 WHEELS: CAMPAGNOLO BORA

ALSO AVAILABLE WITH DURA ACE 10 SP DOUBLE
 (Y7B22)



MIS.SLP

A1	AS	B1	BS	D	E	G	G2
500	470	525	512	58	115	74,5°	6°
530	500	535	522	68	130	74°	6°
550	520	550	537	68	145	73,5°	5°
570	540	560	548	68	160	73,5°	5°
590	560	575	562	68	180	73°	4°
610	580	585	572	68	200	72,5°	4°

> NEW CARBON MONOCOQUE DESIGN > CARBON NANO TECHNOLOGY > FULLY INTEGRATED HEADSET SYSTEM > OVERSIZED BB FOR HIGHER RIGIDITY > SUPER LIGHT WEIGHT > FAST AND EXCELLENT IN REACTION > USED AND TESTED BY PROFESSIONAL RIDERS

H-C

HORS CATEGORIE

928 CARBON SL

SRAM FORCE 10 SP DOUBLE (Y7B23),
COLOUR ES

GROUP:	SRAM FORCE
CRANKSET:	SRAM FORCE CARBON
HANDLEBARS:	ITM K-SWORD CARBON
STEM:	ITM K-SWORD CARBON
SEATPOST:	ITM K-SWORD CARBON
WHEELS:	MAVIC KSYRIUM SL



R

M

S

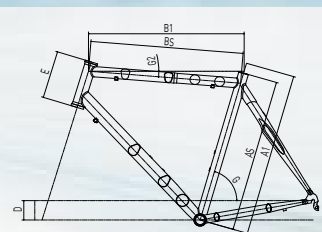
H-C

HORS CATEGORIE

FG LITE CARBONDURA ACE 10 SP DOUBLE (Y7B25),
COLOUR GH

GROUP: SHIMANO DURA ACE
 CRANKSET: FSA K-FORCE MEGA EXO CARBON
 HANDLEBARS: ITM 101 CARBON
 STEM: ITM 101 CARBON
 SEATPOST: ITM 101 CARBON
 WHEELS: MAVIC KSYRIUM SL

ALSO AVAILABLE IN COLOUR CK, WITH RECORD 10 SP
 DOUBLE (Y7B24) AND WITH ULTEGRA 10 SP COMPACT
 (Y7B26)



MIS.SLP

A1	AS	B1	BS	D	E	G	62
490	460	523	509	58	115	74,5°	7°
500	470	524	512	58	115	74,5°	6°
510	480	526	515	58	115	74°	5°
520	490	530	520	63	115	74°	4,5°
530	500	535	523	68	130	74°	5,5°
540	510	540	530	68	130	74°	4,5°
550	50	550	538	68	145	73,5°	5°
560	530	555	545	68	145	73,5°	4°
570	540	560	550	68	160	73,5°	5°
580	550	570	560	68	160	73°	4°
590	560	575	563	68	180	73°	5°
600	570	580	570	68	180	73°	4°
610	580	585	572	68	200	72,5°	5°
620	590	590	579	68	200	72,5°	4°
630	600	595	583	68	210	72,5°	4,5°



> TRIPLE BUTTED HYPERALLOY > STRUCTURAL FOAM INJECTION > CARBON SUPER-HIGH MODULUS SEAT STAYS > FULLY INTEGRATED HEADSET SYSTEM > CUSTOM SIZE GEOMETRY > SUPER LIGHT WEIGHT > USED AND TESTED BY PROFESSIONAL RIDERS

H-C

HORS CATEGORIE

928 CARBON SL

(X7B03) COLOUR ES

SIZES: 50-53-55-57-59-61
 FORKS: BIANCHI FF16 SUPERLIGHT
 HEADSET: FSA ORBIT CF

**H-C**

HORS CATEGORIE

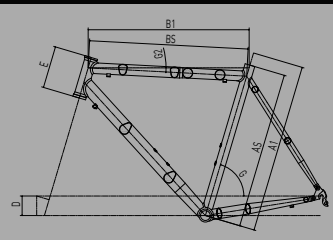
FG LITE ALU

(X7B05) COLOUR CK

SIZES: 46-49>63 X 1CM
 FORKS: BIANCHI FF16 SUPERLIGHT
 HEADSET: FSA ORBIT C

ALSO AVAILABLE IN COLOUR GH

TRIPLE BUTTED HYPERALLOY
 STRUCTURAL FOAM INJECTION
 FULLY INTEGRATED HEADSET SYSTEM
 CUSTOM SIZE GEOMETRY
 SUPER LIGHT WEIGHT
 USED AND TESTED BY PROFESSIONAL RIDERS



MIS.SLP

A1	AS	B1	BS	D	E	G	G2
460	440	520	505	58	115	74,5°	9°
490	460	523	509	58	115	74,5°	7°
500	470	524	512	58	115	74,5°	6°
510	480	524	515	58	115	74°	5°
520	490	530	520	63	115	74°	4,5°
530	500	535	523	68	130	74°	5,5°
540	510	540	530	68	130	74°	4,5°
550	520	550	538	68	145	73,5°	6°
560	530	555	545	68	145	73,5°	4°
570	540	560	550	68	160	73,5°	5°
580	550	570	560	68	160	73°	4°
590	560	575	563	68	180	73°	5°
600	570	580	570	68	180	73°	4°
610	580	585	572	68	200	72,5°	5°
620	590	590	579	68	200	72,5°	4°
630	600	595	583	68	210	72,5°	4,5°

H-C

HORS CATEGORIE

FG LITE ALU/CARBON

(X7B04) COLOUR GH

SIZES: 49>63 X 1CM
 FORKS: BIANCHI FF16 SUPERLIGHT
 HEADSET: FSA ORBIT CF

ALSO AVAILABLE IN COLOUR CK

**R****M****S**

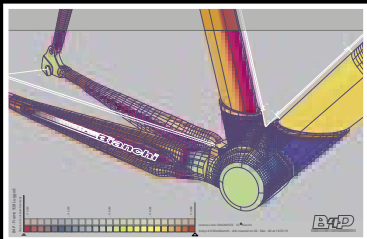
ROAD **B4P**
BORN FOR PERFORMANCE



ROAD B4P

BORN FOR PERFORMANCE

The frames of the B4P series are *performance orientated*, but *versatile* by nature. Weight is a key factor but not exclusively so. The frames are unique for originality and technical features. Nanotechnology, ultimate aluminium alloy, modern design are all features that make a difference. Within this range we find the **928 Carbon L**, boasting nanotech carbon tubes and lugs. A distinctive feature is the oversized bottom bracket shell as well as the design of the rear stays with their "X" section. Excellent levels of torsional *stiffness* and significant *weight saving*: the 928 Carbon L weighs about 1,1 kg. The new **Freccia Celeste** in Hyperalloy boasts *new hydroformed sections*, especially in the front triangle, which now boasts increased stiffness. Oversized down tube and top tube are specifically shaped where they join the head tube. Updated rear stays in "X" section carbon fibre. New processing techniques for aluminium and carbon have helped reduce the target weight. **S9 Malta Carbon**, is an exclusive mixture of titanium and carbon, and the **1885 Alu Carbon** frame completes the range.



Diagnostic surface analysis



R

E

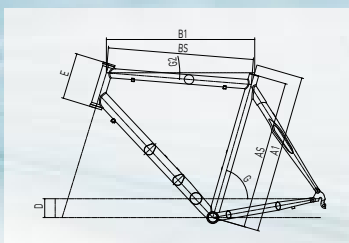
S

E4F

BORN FOR PERFORMANCE

S9 MATTA TITANIUM CARBONRECORD 10 SP DOUBLE (Y7B27),
COLOUR TK

GROUP:	CAMPAGNOLO RECORD
CRANKSET:	CAMPAGNOLO RECORD CARBON
HANDLEBARS:	ITM 101 CARBON
STEM:	ITM 101 CARBON
SEATPOST:	ITM 101 CARBON
WHEELS:	CAMPAGNOLO EURUS



MIS.SLP

A1	AS	B1	BS	D	E	G	G2
490	460	532	509	58	115	74,5°	7°
500	470	524	512	58	115	74,5°	6°
510	480	526	515	58	115	74°	5°
520	490	530	520	63	115	74°	4,5°
530	500	535	523	68	130	74°	5,5°
540	510	540	530	68	130	74°	4,5°
550	520	550	538	68	145	73,5°	5°
560	530	555	545	68	145	73,5°	4°
570	540	560	550	68	160	73,5°	5°
580	550	570	560	68	160	73°	4°
590	560	575	563	68	180	73°	5°
600	570	580	570	68	180	73°	4°
610	580	585	572	68	200	72,5°	5°
620	590	590	579	68	200	72,5°	4°
630	600	595	583	68	210	72,5°	4,5°



> DOUBLE BUTTED TITANIUM ALLOY (3AL/2,5V) > STRUCTURAL FOAM INJECTION > CARBON SUPER-HIGH MODULUS SEAT STAYS > FULLY INTEGRATED HEADSET SYSTEM > EXCELLENT ABSORPTION OF ROAD VIBRATIONS
> CUSTOM SIZE GEOMETRY > BEST RIGIDITY VS. COMFORT

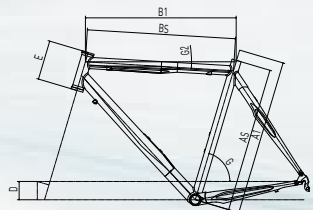
B4P

BORN FOR PERFORMANCE

FRECCIA CELESTE HCRECORD 10 SP DOUBLE (Y7B28),
COLOUR RP

GROUP: CAMPAGNOLO RECORD
 CRANKSET: CAMPAGNOLO RECORD CARBON
 HANDLEBARS: ITM 101 CARBON
 STEM: ITM 101 CARBON
 SEATPOST: ITM 101 CARBON
 WHEELS: CAMPAGNOLO EURUS

ALSO AVAILABLE IN COLOUR CK AND WITH ULTEGRA
 MIX 10 SP COMPACT (Y7B29)



MIS.SLP

A1	AS	B1	BS	D	E	G	G2
490	460	523	509	58	115	74,5°	7°
500	470	524	512	58	115	74,5°	6°
510	480	526	515	58	115	74°	5°
520	490	530	520	63	115	74°	4,5°
530	500	535	523	68	130	74°	5,5°
540	510	540	530	68	130	74°	4,5°
550	520	550	538	68	145	73,5°	5°
560	530	555	545	68	145	73,5°	4°
570	540	560	550	68	160	73,5°	5°
580	550	570	560	68	160	73°	4°
590	560	575	563	68	180	73°	5°
600	570	580	570	68	180	73°	4°
610	580	585	572	68	200	72,5°	5°
620	590	590	579	68	200	72,5°	4°
630	600	595	583	68	210	72,5°	4,5°



> MULTIPLE BUTTED ALUMINIUM ALLOY (7020) > STRUCTURAL FOAM INJECTION > CARBON SUPER-HIGH MODULUS SEAT/CHAIN STAYS > FULLY INTEGRATED HEADSET SYSTEM > CNC BOTTOM BRACKET FOR HIGHER RIGIDITY > SMOOTH WELD PUTTY (SWP) > CUSTOM SIZE GEOMETRY > VERY QUICK IN CORNERS AND ACCELERATIONS

R**M****S**

R

E

N

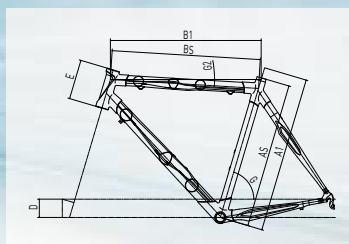
E4F

BORN FOR PERFORMANCE

928 CARBON LRECORD 10 SP DOUBLE (Y7B3D),
COLOUR EC

GROUP: CAMPAGNOLO RECORD
 CRANKSET: CAMPAGNOLO RECORD CARBON
 HANDLEBARS: ITM 101 CARBON
 STEM: ITM 101 CARBON
 SEATPOST: ITM 101 CARBON
 WHEELS: CAMPAGNOLO EURUS

ALSO AVAILABLE IN COLOUR ED



MIS.SLP

A1	AS	B1	BS	D	E	G	G2
490	460	523	509	58	115	74,5°	7°
500	470	525	512	58	115	74,5°	6°
510	480	526	514	58	115	74°	5°
520	490	530	520	63	115	74°	5°
530	500	535	523	68	130	74°	6°
540	510	540	530	68	130	74°	5°
550	520	550	538	68	145	73,5°	5°
560	530	555	545	68	145	73,5°	4°
570	540	560	548	68	160	73,5°	5°
580	550	570	560	68	160	73°	4°
590	560	575	562	68	180	73°	5°
600	570	580	569	68	180	73°	4°
610	580	585	571	68	200	72,5°	5°
620	590	590	579	68	200	72,5°	4°
630	600	595	583	68	210	72,5°	4°



> CARBON LUGGED DESIGN > CARBON NANO TECHNOLOGY > FULLY INTEGRATED HEADSET SYSTEM > OVERSIZED BB FOR HIGHER RIGIDITY > 15 SIZES (EACH CENTIMETER) > SUPER LIGHT > ALL ROUND RACE PERFORMANCE

B4P

BORN FOR PERFORMANCE

928 CARBON L

CHORUS 10 SP DOUBLE (Y7B03),
COLOUR ED

GROUP: CAMPAGNOLO CHORUS
CRANKSET: CAMPAGNOLO CHORUS CARBON
HANDLEBARS: ITM 4-EVER CARBON
STEM: ITM 4-EVER CARBON
SEATPOST: ITM 4-EVER CARBON
WHEELS: CAMPAGNOLO ZONDA

ALSO AVAILABLE IN COLOUR EC, WITH DURA ACE 10 SP
DOUBLE (Y7B33) AND WITH ULTEGRA 10 SP DOUBLE
(Y7B04)



B4P

BORN FOR PERFORMANCE

928 CARBON L

SRAM RIVAL 10 SP COMPACT (Y7B35),
COLOUR EC

GROUP: SRAM RIVAL
CRANKSET: SRAM RIVAL
HANDLEBARS: ITM 4-EVER CARBON
STEM: ITM 4-EVER CARBON
SEATPOST: ITM 4-EVER CARBON
WHEELS: MAVIC KSYRIUM ELITE

ALSO AVAILABLE IN COLOUR ED



R

M

S

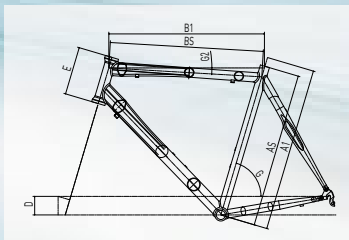
E4F

BORN FOR PERFORMANCE

1885ULTEGRA 10 SP DOUBLE (Y7B37),
COLOUR CK

GROUP:	SHIMANO ULTEGRA
CRANKSET:	SHIMANO ULTEGRA
HANDLEBARS:	ITM VISIA CARBON
STEM:	ITM VISIA CARBON
SEATPOST:	ITM VISIA CARBON
WHEELS:	MAVIC AKSIUM

ALSO AVAILABLE IN COLOUR ED, WITH DURA ACE 10 SP DOUBLE (Y7B36), WITH ULTEGRA 10 SP COMPACT (Y7B38), WITH 105 10 SP DOUBLE (Y7B39) AND WITH 105 10 SP TRIPLE (Y7B40)



MIS.SLP

A1	AS	B1	BS	D	E	G	G2
490	460	523	510	58	110	74,5°	6°
510	480	524	517	58	110	74°	5°
530	500	535	524	68	125	74°	5°
550	520	550	538	68	140	73,5°	5°
570	540	560	549	68	155	73,5°	4°
590	560	575	563	68	175	72°	4°
610	580	585	572	68	195	72,5°	4°
630	600	595	583	68	210	72,5°	4°



> TRIPLE BUTTED ALUMINIUM ALLOY (7000 SERIES) > HYDROFORMED DOWN TUBE AND TOP TUBE > CARBON SUPER-HIGH MODULUS SEAT STAYS > SMOOTH TIG WELDING > SPECIAL ANTI-CORROSION SURFACE TREATMENT
> ALL ROUND RACE PERFORMANCE

B4P
BORN FOR PERFORMANCE

1885

VELOCE 10 SP DOUBLE (Y7B06),
COLOUR ED

GROUP:	CAMPAGNOLO VELOCE
CRANKSET:	CAMPAGNOLO VELOCE
HANDLEBARS:	ITM LITE LUXE WING
STEM:	BIANCHI COMPONENTI CARBON
SEATPOST:	BIANCHI COMPONENTI CARBON
WHEELS:	CAMPAGNOLO KHAMSIN

ALSO AVAILABLE IN COLOUR CK



R

M

S

B4P
BORN FOR PERFORMANCE**S9 MATTA TITANIUM CARBON**

(X7B06) COLOUR TK

SIZES: 49>63 X 1CM
 FORKS: BIANCHI FFV FULL CARBON
 HEADSET: FSA ORBIT CF

B4P
BORN FOR PERFORMANCE**FRECCIA CELESTE**

HC (X7B07) COLOUR RP

SIZES: 49>63 X 1CM
 FORKS: BIANCHI FFV FULL CARBON
 HEADSET: FSA ORBIT CF

ALSO AVAILABLE IN COLOUR CK

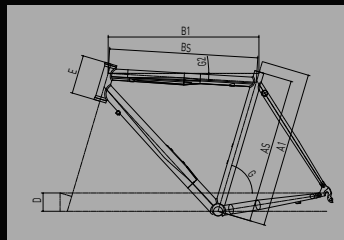
B4P
BORN FOR PERFORMANCE**FRECCIA CELESTE**

HA (X7B08) COLOUR CK

SIZES: 49>63 X 1CM
 FORKS: BIANCHI FFV FULL CARBON
 HEADSET: FSA ORBIT CF

ALSO AVAILABLE IN COLOUR RP

MULTIPLE BUTTED ALUMINIUM ALLOY (7020)
 STRUCTURAL FOAM INJECTION
 FULLY INTEGRATED HEADSET SYSTEM
 SMOOTH WELDING PUTTY (SWP)
 CUSTOM SIZE GEOMETRY
 VERY QUICK IN CORNERS AND ACCELERATIONS



MIS.SLP

A1	AS	B1	BS	D	E	G	G2
460	440	520	505	58	115	74,5°	9°
490	460	523	509	58	115	74,5°	7°
500	470	524	512	58	115	74,5°	6°
510	480	526	515	58	115	74°	5°
520	490	530	520	63	115	74°	4,5°
530	500	535	523	68	130	74°	5,5°
540	510	540	530	68	130	74°	4,5°
550	520	550	538	68	145	73,5°	5°
560	530	555	545	68	145	73,5°	4°
570	540	560	550	68	160	73,5°	5°
580	550	570	560	68	160	73°	4°
590	560	575	563	68	180	73°	5°
600	570	580	570	68	180	73°	4°
610	580	585	572	68	200	72,5°	5°
620	590	590	579	68	200	72,5°	4°
630	600	595	583	68	210	72,5°	4,5°

B4P
BORN FOR PERFORMANCE

928 CARBON L

(X7809) COLOUR ED

SIZES: 49-63 X 1CM
FORKS: BIANCHI FFV FULL CARBON
HEADSET: FSA ORBIT CF

ALSO AVAILABLE IN COLOUR EC



B4P
BORN FOR PERFORMANCE

PINELLA BORON STEEL

(X7812) COLOUR CK

SIZES: 49-63 X 1CM
FORKS: BIANCHI FFV FULL CARBON
HEADSET: FSA ORBIT X

TRIPLE BUTTED BORON STEEL
LOW TORSION PROFILE TUBING
STRUCTURAL FOAM INJECTION
CUSTOM SIZE
CATAPHORESIS TREATMENT
GOOD RIGIDITY VS. COMFORT



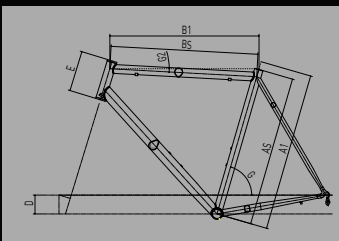
B4P
BORN FOR PERFORMANCE

1885 ALU/CARBON

(X7810) COLOUR CK

SIZES: 49-51-53-55-57-59-61-63
FORKS: BIANCHI FLN CARBON W. ALU STEERER
HEADSET: FSA ZS-4 CUSTOM

ALSO AVAILABLE IN COLOUR ED



MIS.SLP

A1	AS	B1	BS	D	E	G	G2
490	460	523	510	58	100	74,5°	7°
500	470	524	512	58	100	74,5°	6°
510	480	525	515	58	100	74°	5°
520	490	530	521	63	100	74°	4°
530	500	535	525	68	110	74°	5°
540	510	540	531	68	116	74°	4°
550	520	550	540	68	125	73,5°	4°
560	530	555	545	68	130	73,5°	4°
570	540	560	550	68	142	73,5°	4°
580	550	570	560	68	150	73°	4°
590	560	575	565	68	162	73°	4°
600	570	580	570	68	168	73°	4°
610	580	585	574	68	180	72,5°	4°
620	590	590	579	68	190	72,5°	4°
630	600	595	584	68	200	72,5°	4°

R

M

S

R

E

S

ROAD 



ROAD



Cycling means racing, speed and pleasure. For many, many miles.

The **Coast to Coast** project was born to meet all these demands. *New geometries*, an easy and relaxed position in the saddle. The head tube, the "heart" of the frame, is sensibly higher than when compared to the classical design.

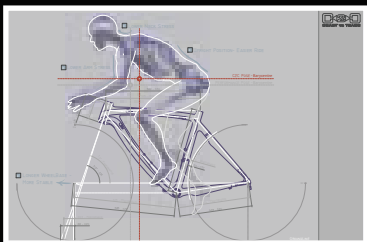
Shoulders and neck become more relaxed and the torso opens up allowing breathing to become easier.

Also the pace is different. The greater distance between the bottom bracket and the fork ends offers *stability* and *control* at a medium pace, the front wheel is progressive and easy to steer.

The head angle is also changed and more relaxed, for a more comfortable and pleasant ride. The rear stays are longer and well integrated with the main triangle shape. The extra few millimetres of difference give a *higher stability* to the rear wheel and increase the possibility to dissipate the shocks coming from the road surface. *Comfort* is enhanced by the new BAT (Bianchi Active Technology) which, thanks to the positioning of the carbon fibres, decreases the vertical



stiffness with no side effect on the horizontal one. A complete range either for design or materials. The Coast to Coast concept applies to the following models: **928 Carbon**, **59 Matta** in titanium, **Via Nirone 7 Alu Carbon** and **Via Nirone 7 Alu**.



Rear analysis

R

M

S

R

E

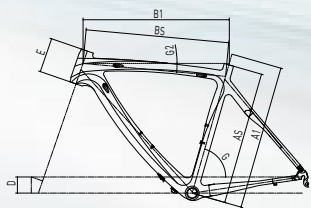
N



928 CARBON

DURA ACE 10 SP COMPACT (Y7B16),
COLOUR CS

GROUP:	SHIMANO DURA ACE
CRANKSET:	FSA SL-K CARBON MEGA EXO
HANDLEBARS:	FSA K-WING AERO CARBON
STEM:	FSA CARBON PRO
SEATPOST:	FSA SL 280 CARBON PRO
WHEELS:	MAVIC KSYRIUM ELITE



MIS.SLP

A1	AS	B1	BS	D	E	G	G2
500	470	530	514	68	125	74,5°	8°
530	500	540	526	68	140	74°	6°
550	520	555	539	68	155	73,5°	6°
580	550	575	563	68	170	73°	6°
610	580	590	575	68	210	72,5°	5°

B A T



> NEW CARBON MONOCOQUE DESIGN > FULLY INTEGRATED HEADSET SYSTEM > OVERSIZED BB FOR HIGHER RIGIDITY > BIANCHI ACTIVE TECHNOLOGY (BAT) > LONG DISTANCE RACE DEDICATED GEOMETRY > DRIVING STABILITY IN XTREME CONDITIONS



928 CARBON

CHORUS 10 SP COMPACT (Y7B15),
COLOUR CH

GROUP:	CAMPAGNOLO CHORUS
CRANKSET:	OMEGA CARBON PRO MEGA EXO
HANDLEBARS:	FSA K-WING AERO CARBON
STEM:	FSA CARBON PRO
SEATPOST:	FSA SL 280 CARBON PRO
WHEELS:	CAMPAGNOLO SCIROCCO

ALSO AVAILABLE IN COLOUR CS AND WITH RECORD 10 SP COMPACT (Y7B14), COLOUR CS ONLY

B A T



928 CARBON

ULTEGRA 10 SP COMPACT (Y7B01),
COLOUR CS

GROUP:	SHIMANO ULTEGRA
CRANKSET:	OMEGA CARBON PRO MEGA EXO
HANDLEBARS:	FSA K-WING AERO CARBON
STEM:	FSA CARBON PRO
SEATPOST:	FSA SL 280 CARBON PRO
WHEELS:	MAVIC AKSIUM

ALSO AVAILABLE IN COLOUR CH, WITH ULTEGRA 10 SP TRIPLE (Y7B17), WITH 105 10 SP COMPACT (Y7B02) AND WITH 105 10 SP TRIPLE (Y7B58)

B A T



R

M

S

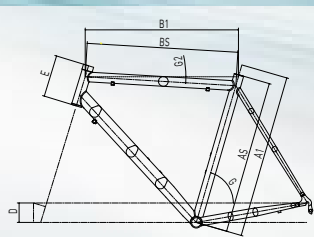


S9 MATTA TITANIUM

DURA ACE 10 SP COMPACT (Y7B18),
COLOUR TC

GROUP: SHIMANO DURA ACE
CRANKSET: FSA SL-K CARBON MEGA EXO
HANDLEBARS: FSA K-WING AERO CARBON
STEM: FSA CARBON PRO
SEATPOST: FSA SL 280 CARBON PRO
WHEELS: MAVIC KSYRIUM ELITE

ALSO AVAILABLE WITH ULTEGRA 10 SP COMPACT
(Y7B19) AND WITH 105 10 SP COMPACT (Y7B20)



MIS.SLP

A1	AS	B1	BS	D	E	G	G2
500	470	530	515	68	115	74,5°	8°
530	500	540	527	68	125	74°	6°
550	520	555	542	68	140	73,5°	5°
580	550	575	563	68	140	73°	5°
610	580	590	576	68	195	72,5°	4°

B A T



> BUTTED TITANIUM ALLOY (3AL/2,5V) > STRUCTURAL FOAM INJECTION > BIANCHI ACTIVE TECHNOLOGY (BAT) > EXCELLENT ABSORPTION OF ROAD VIBRATIONS > LONG DISTANCE RACE DEDICATED GEOMETRY > BEST RIGIDITY VS. COMFORT > DRIVING STABILITY IN XTREME CONDITIONS



R
M
S

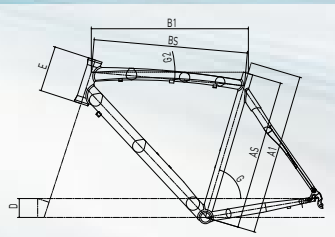


VIA NERONE 7 ALU CARBON

ULTEGRA MIX 10 SP DOUBLE (Y7B07),
COLOUR CK

GROUP:	SHIMANO ULTEGRA/105
CRANKSET:	FSA GOSSAMER MEGA EXO
HANDLEBARS:	ITM LITE LUXE WING
STEM:	BIANCHI COMPONENTI ALU
SEATPOST:	BIANCHI COMPONENTI ALU
WHEELS:	SHIMANO WH-R500

ALSO AVAILABLE IN COLOUR GI AND WITH ULTEGRA MIX
10 SP TRIPLE (Y7B08)



MIS.SLP

A1	AS	B1	BS	D	E	G	G2
500	470	530	515	68	120	74,5°	7°
530	500	540	527	68	135	74°	6°
550	520	555	541	68	145	73,5°	5°
570	540	565	552	68	165	73,5°	5°
590	560	580	568	68	180	73°	4°
610	580	590	577	68	200	72,5°	4°

B A T



> TRIPLE BUTTED ALUMINIUM ALLOY (7000 SERIES) > HYDROFORMED TOP TUBE > CARBON SUPER-HIGH MODULUS SEAT STAYS > ABSORPTION OF ROAD VIBRATIONS > SMOOTH TIG WELDING > BIANCHI ACTIVE TECHNOLOGY (BAT)
> LONG DISTANCE RACE DEDICATED GEOMETRY > STRAIGHT LINE STABILITY FOR EASY RIDING



VIA NIRONE 7 ALU CARBON

VELOCE 10 SP COMPACT (Y7B43),
COLOUR GI

GROUP:	CAMPAGNOLO VELOCE
CRANKSET:	FSA GOSSAMER MEGA EXO
HANDLEBARS:	ITM LITE LUXE WING
STEM:	BIANCHI COMPONENTI ALU
SEATPOST:	BIANCHI COMPONENTI ALU
WHEELS:	MICHE/AMBROSIO

ALSO AVAILABLE IN COLOUR CK AND WITH VELOCE 10
SP DOUBLE (Y7B42)

B A T



R

M

S



VIA NIRONE 7 ALU

MIRAGE 10 SP DOUBLE (Y7B44),
COLOUR KT

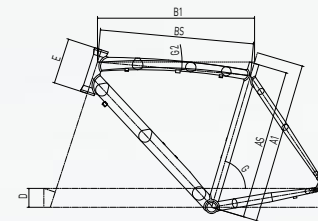
GROUP: CAMPAGNOLO MIRAGE
CRANKSET: FSA GOSSAMER MEGA EXO
HANDLEBARS: ITM 300 SUPER OVER
STEM: BIANCHI COMPONENTI ALU
SEATPOST: BIANCHI COMPONENTI ALU
WHEELS: MICHE/AMBROSIO

ALSO AVAILABLE IN COLOUR CK AND WITH MIRAGE
RACE 10 SP TRIPLE (Y7B11), ALSO IN COLOUR PB

B A T



> TRIPLE BUTTED ALUMINIUM ALLOY (7000 SERIES) > HYDROFORMED TOP TUBE > SMOOTH TIG WELDING > SPECIAL ANTI-CORROSION SURFACE TREATMENT > BIANCHI ACTIVE TECHNOLOGY (BAT) > LONG DISTANCE RACE DEDICATED GEOMETRY > STRAIGHT LINE STABILITY FOR EASY RIDING



MIS.SLP

A1	AS	B1	BS	D	E	G	G2
440	420	510	494	58	110	75°	10°
460	440	525	509	58	115	74,5°	9°
500	470	530	515	68	120	74,5°	7°
530	500	540	527	68	135	74°	6°
550	520	555	541	68	145	73,5°	5°
570	540	565	552	68	165	73,5°	5°
590	560	580	568	68	180	73°	4°
610	580	590	577	68	200	72,5°	4°



VIA NIRONE 7 ALU

XENON 10 SP COMPACT (Y7B10),
COLOUR CK

GROUP: CAMPAGNOLO XENON
CRANKSET: FSA OMEGA MEGA EXO
HANDLEBARS: ITM 300 SUPER OVER
STEM: BIANCHI COMPONENTI ALU
SEATPOST: BIANCHI COMPONENTI ALU
WHEELS: MICHE/AMBROSIO

ALSO AVAILABLE IN COLOURS PB AND KT

B A T





VIA NIRONE 7 ALU

TIAGRA 9 SP TRIPLE (Y7B48),
COLOUR PB

GROUP:	SHIMANO TIAGRA
CRANKSET:	FSA VERO
HANDLEBARS:	ITM 300 SUPER OVER
STEM:	BIANCHI COMPONENTI ALU
SEATPOST:	BIANCHI COMPONENTI ALU
WHEELS:	JOYTECH/AMBROSIO

ALSO AVAILABLE IN COLOUR CK, WITH TIAGRA 9 SP
DOUBLE (Y7B47), WITH 10S 10 SP COMPACT (Y7B09),
COLOUR CK AND KT AND WITH 10S 10 SP TRIPLE
(Y7B45), COLOUR CK AND KT

B A T



VIA NIRONE 7 ALU

SORA 8 SP DOUBLE (Y7B49),
COLOUR CK

GROUP:	SHIMANO SORA
CRANKSET:	FSA RPM CRD-215
HANDLEBARS:	ITM 300 SUPER OVER
STEM:	BIANCHI COMPONENTI ALU
SEATPOST:	BIANCHI COMPONENTI ALU
WHEELS:	JOYTECH/AMBROSIO

ALSO AVAILABLE IN COLOUR PB AND WITH SORA 8 SP
TRIPLE (Y7B50), ALSO IN COLOUR KT

B A T



R

M

S



928 CARBON

(X7801) COLOUR CH

SIZES: 50-53-55-58-61
 FORKS: BIANCHI FF9 FULL CARBON
 HEADSET: FSA ORBIT CE PLUS

ALSO AVAILABLE IN COLOUR CS

B A T



VIA NIRONE 7 ALU/CARBON

(X7811) COLOUR CK

SIZES: 50-53-55-57-59-61
 FORKS: BIANCHI FL5 CARBON WITH ALU STEERER
 HEADSET: FSA ORBIT CF

ALSO AVAILABLE IN COLOUR 6I

B A T



S9 MATTA TITANIUM

(X7802) COLOUR TC

SIZES: 50-53-55-58-61
 FORKS: BIANCHI FF9 FULL CARBON
 HEADSET: FSA ORBIT X

B A T





R

M

S



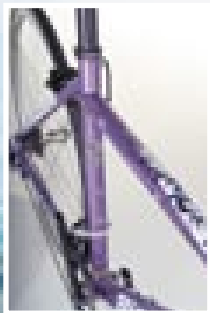
ROAD DAMA BIANCA

Bianchi has decided to dedicate even more attention to its female cycling fans thanks to the contribution and cooperation from its professional cycling team, as well as the fast growing demands of the market.

Three models of **Dama Bianca** are dedicated to the cyclists for three different ways of perceiving cycling. **Lei** FG Lite Woman is *quick-tempered*, a bike that *does not like compromises*. The Hyperalloy has been conceived for the competitive cyclist, to enhance the athletic skills of the rider: **Elle**, the classic *compromise* to suit all tastes.

The Hydroforming technology employed in the aluminium tubes enhances the stiffness qualities of this frame. *Performance and comfort* combine together to enhance the versatility. **She**, the entry level of the range, a modern and *easy* means to approach cycling, taking advantage of a bicycle designed for women. A common trait: geometries, though different one from the other, are all conceived based on the specifications of the female morphology. Frames are shorter and more compact and components are designed to help face all kind of terrains.

Attractive graphics and finish, for *the true ladies of the road*.

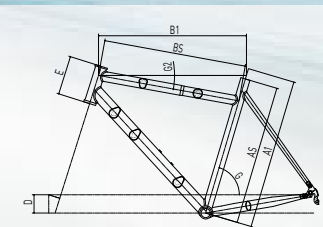


DAMA BIANCA LEI DAMA BIANCA

RECORD 10 SP DOUBLE (Y7B51),
COLOUR VT

GROUP: CAMPAGNOLO RECORD
CRANKSET: CAMPAGNOLO RECORD
HANDLEBARS: ITM 101 CARBON
STEM: ITM 101 CARBON
SEATPOST: ITM 101 CARBON
WHEELS: CAMPAGNOLO EURUS

ALSO AVAILABLE IN COLOUR CK



MIS.SLP

A1	AS	B1	BS	D	E	G	G2
460	430	521	502	58	105	74,5°	13°
500	470	525	508	58	115	74,5°	11°
530	500	535	517	68	130	74°	10°
550	520	550	530	68	145	73,5°	10°
570	540	560	540	68	160	73,5°	10°
590	560	575	554	68	180	73°	10°



> TRIPLE BUTTED HYPERALLOY > STRUCTURAL FOAM INJECTION > FULLY INTEGRATED HEADSET SYSTEM > SPECIAL LADY GEOMETRY > CUSTOM SIZE GEOMETRY > USED AND TESTED BY LADIES PROFESSIONAL RIDERS

R

M

S

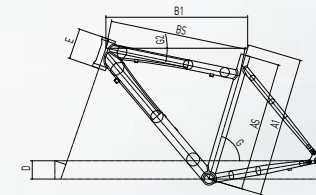
DAMA BIANCA ELLE DAMA BIANCA

ULTEGRA 10 SP TRIPLE (Y7B12),
COLOUR CK

GROUP:	SHIMANO ULTEGRA
CRANKSET:	FSA GOSSAMER MEGA EXO
HANDLEBARS:	ITM ELLE
STEM:	BIANCHI COMPONENTI ALU
SEATPOST:	BIANCHI COMPONENTI ALU
WHEELS:	SHIMANO WH-R500



> TRIPLE BUTTED ALUMINIUM ALLOY (7000 SERIES) > HYDROFORMED DOWN TUBE AND TOP TUBE > SMOOTH TIG WELDING > SPECIAL ANTI-CORROSION SURFACE TREATMENT > SPECIAL LADY GEOMETRY > ALL ROUND RACE PERFORMANCE



MIS.SLP

A1	AS	B1	BS	D	E	G	G2
460	430	521	504	58	100	74,5°	12°
490	460	523	509	58	110	74,5°	11°
510	480	527	516	58	110	74°	10°
530	500	535	523	68	125	74°	10°

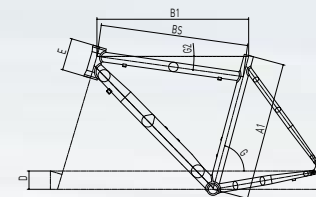
DAMA BIANCA SHE DAMA BIANCA

MIRAGE RACE 10 SP TRIPLE (Y7B13),
COLOUR CK

GROUP:	CAMPAGNOLO MIRAGE
CRANKSET:	CAMPAGNOLO MIRAGE RACE
HANDLEBARS:	ITM ELLE
STEM:	BIANCHI COMPONENTI ALU
SEATPOST:	BIANCHI COMPONENTI ALU
WHEELS:	MICHE/AMBROSIO



> TRIPLE BUTTED ALUMINIUM ALLOY (7000 SERIES) > SMOOTH TIG WELDING > SPECIAL ANTI-CORROSION SURFACE TREATMENT > SPECIAL LADY GEOMETRY > EASY RIDING



MIS.

A1	B1	BS	D	E	G	G2
440	500	487	70	110	75°	13°
470	507	495	70	115	75°	10°
500	516	505	70	120	75°	7°
530	530	520	70	125	74°	5°

DAMA BIANCA
LEI DAMA BIANCA

(X7B18) COLOUR VT

SIZES: 46-50-53-55-57-59

FORKS: BIANCHI FF16 SUPERLIGHT FORK

HEADSET: FSA ORBIT CF

ALSO AVAILABLE IN COLOUR CK



R

M

S

ROAD SPECIAL

Professional cycling means a struggle, a sacrifice, but also pleasure. The pleasure to ride on special bicycles born from the commitment of technicians and riders to reach even more important goals. The monocoque **D2 Crono**, a jewel of *technology* and *art design*, is the result of wind tunnel tests and real life on the road tests. And again, it is the secret weapon of the rider in the time trial. The research of performance is a priority, and like the design of its technical features is stunning.

The frame is compact, stiff and enriched by light and sophisticated high modulus fibres. *Power* is precious, *speed* is a struggle, it's a shame to dissipate them on road and especially on track.

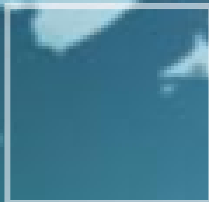
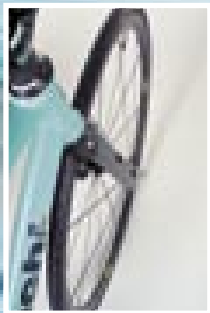
On the track win and defeat are detached by a hundredth of second. The choice is yours.

Vera Carrara chose the first. **D2 Pista** is her favourite. Do you like riding off-road?

Does cyclo-cross suit you? **D2 Ciclocross** takes inspiration from tradition to stir you.

The Reparto Corse design comes from contribution of our MTB team.

Light, stiff, it features double and triple butted aluminium tubes. With the ability to nearly fly over the grass.

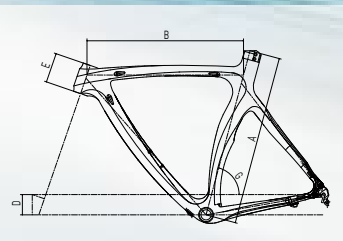


SPECIAL D2 CRONO CARBON

RECORD 10 SP (Y7B52),
COLOUR EK

GROUP: CAMPAGNOLO RECORD
 CRANKSET: PMP MICROROAD II ALX
 HANDLEBARS: ITM NIVOLA AERO BAR STRAIGHT CARBON
 STEM: ITM 101 CARBON
 SEATPOST: ITM 101 CARBON
 WHEELS: CAMPAGNOLO BORA/GHIBLI

ALSO AVAILABLE AS FRAMESET (X7B13) AND IN
 ALUMINIUM WITH ULTEGRA 10 SP (Y7B53), COLOUR CK



MIS.

	A	B	D	E	G
S	570	525	68	100	75°
M	620	545	68	110	74°
L	670	575	68	120	74°



> CARBON MONOCOQUE DESIGN > AERODYNAMIC CONCEPTION > WIND TUNNEL TESTED > REINFORCED BB AREA FOR HIGH RIGIDITY > SPECIFIC TIME TRAIL GEOMETRY > USED AND TESTED BY PROFESSIONAL RIDERS

R

M

S

SPECIAL D2 PISTA ALU

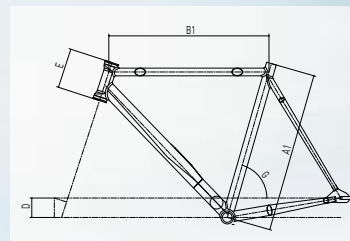
RECORD (Y7B54),
COLOUR CK

GROUP: CAMPAGNOLO RECORD PISTA
HANDLEBARS: ITM 4-EVER SUPER OVER CARBON
STEM: ITM 4-EVER SUPER OVER CARBON
SEATPOST: ITM 4-EVER SUPER OVER CARBON
WHEELS: MAVIC ELLIPSE

ALSO AVAILABLE AS FRAMESET (X7B16)



> MULTIPLE BUTTED ALUMINIUM ALLOY (7020) > STRUCTURAL FOAM INJECTION > MADISON AND POINTS RACE GEOMETRY > CUSTOM SIZE
> DEVELOPED WITH PROFESSIONAL RIDERS



MIS.

A1	B1	D	E	G
490	521	58	110	76°
500	525	58	110	76°
510	527	58	110	76°
520	530	58	110	76°
530	535	58	125	75,5°
540	540	58	125	75,5°
550	550	58	140	75,5°
560	555	58	140	75,5°
570	560	58	155	75,5°
580	570	58	155	75°
590	575	58	175	75°
600	580	58	175	74,5°
610	585	58	195	74,5°
620	590	58	195	74°
630	595	58	210	74°

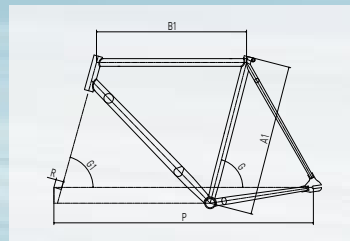
SPECIAL PISTA STEEL

TRACK (Y7BA5),
COLOUR KC

CRANKSET: TRUATIV TOURD
HANDLEBARS: PREMTECTRACK STEEL
STEM: KALLOY AS-600 ALLOY
SEATPOST: KALLOY SP-600 ALLOY
WHEELS: ALX SOLO TRACK



> BUTTED SPECIAL STEEL (CR-MO) > MEGAPRO DOWN TUBE > BRAZED SEAT COLLAR > MADISON AND POINTS RACE GEOMETRY



MIS.

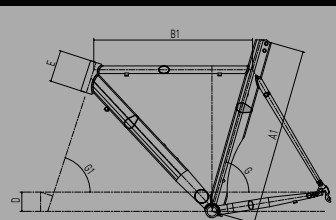
A1	B1	P	R	G1	G
490	523	934	28	74°	76°
510	525	941	28	74°	76°
530	535	947	28	74°	75,5°
550	550	959	28	74°	75,5°
570	560	967	28	74,5°	75,5°
590	575	973	28	75°	75°
610	585	978	28	75°	74,5°

SPECIAL DZ CRONO ALU

(TIME TRAIL) (X7B15)
COLOUR CK

SIZES: 49-63 X 1CM
FORKS: OVAL AERD JETSTREAM CARBON WITH ALU STEERER
HEADSET: FSA ORBIT X

BUTTED ALUMINIUM ALLOY (7020)
STRUCTURAL FOAM INJECTION
AERODYNAMIC CONCEPTION
WIND TUNNEL TESTED
SPECIFIC TIME TRAIL GEOMETRY
CUSTOM SIZE GEOMETRY



MIS.

	A1	B1	D	E	G
490	570	515	58	75	75°
500	580	520	58	75	75°
510	590	523	58	75	75°
520	600	525	63	80	74,5°
530	610	530	68	80	74,5°
540	620	535	68	80	74,5°
550	630	540	68	85	74,5°
560	640	545	68	85	74°
570	650	550	68	90	74°
580	660	560	68	90	74°
590	670	565	68	100	73,5°
600	680	570	68	100	73,5°
610	690	575	68	110	73°
620	700	580	68	115	73°
630	710	590	68	125	73°

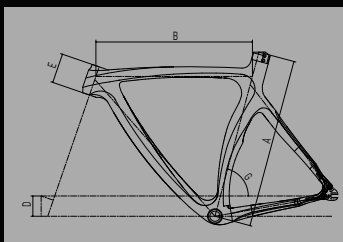


SPECIAL DZ PISTA CARBON

(TRACK) (X7B14)
COLOUR EK

SIZES: S (49-53) - M (54-58) - L (59-63)
FORKS: OVAL TRACK JETSTREAM CARBON WITH ALU STEERER
HEADSET: FSA ORBIT ZS

CARBON MONOCOQUE DESIGN
AERODYNAMIC CONCEPTION
WIND TUNNEL TESTED
REINFORCED BB AREA FOR HIGH RIGIDITY
SPECIFIC PURSUIT GEOMETRY
USED AND TESTED BY PROFESSIONAL RIDERS



MIS.

	A	B	D	E	G
S	570	525	68	100	75°
M	620	545	68	110	74°
L	670	575	68	120	74°



R

M

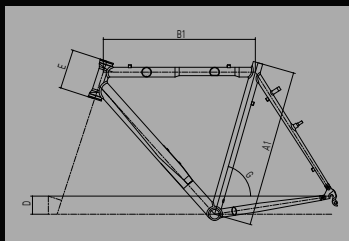
S

SPECIAL DZ CICLOCROSS ALU

(X7B17) COLOUR CK

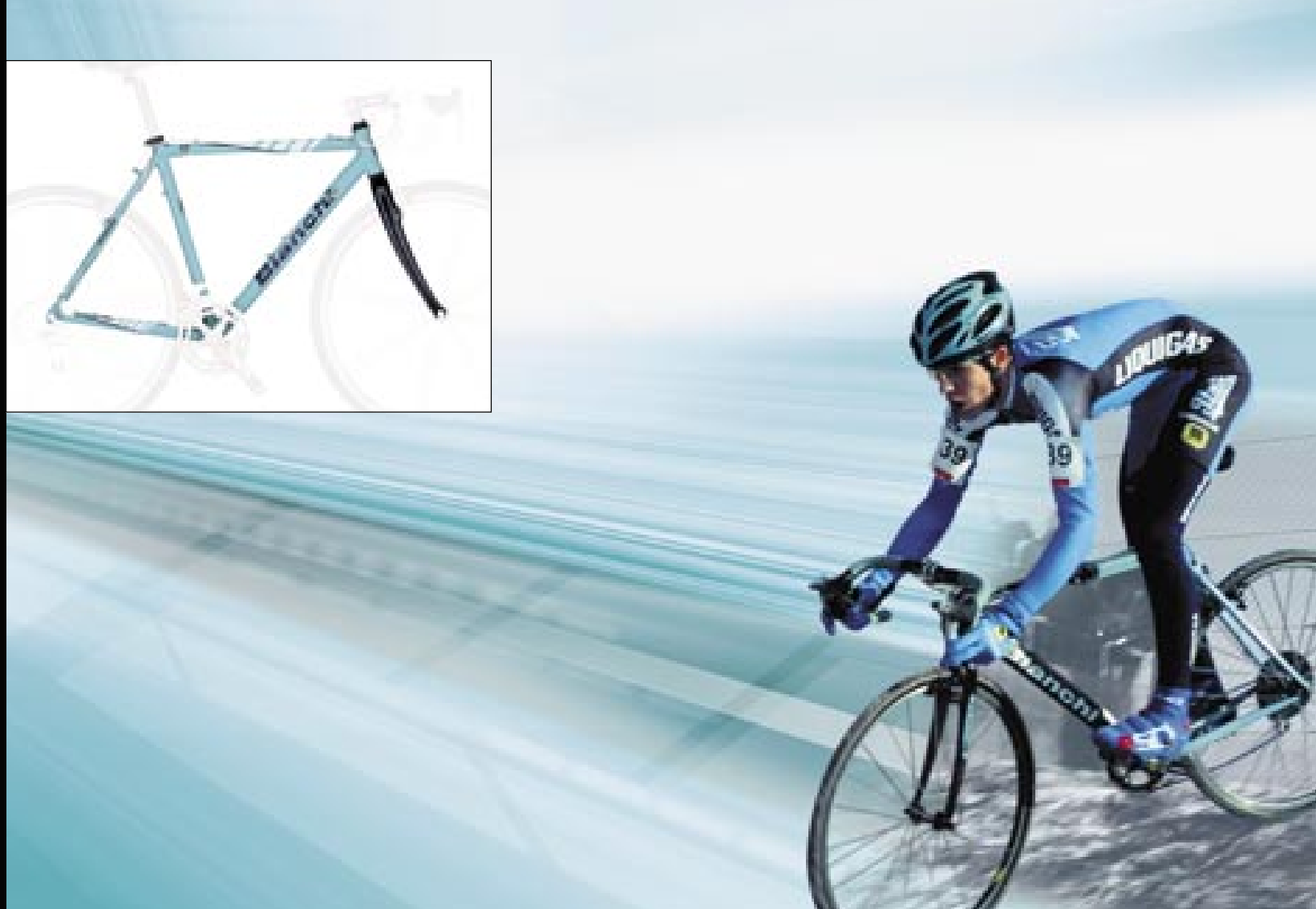
SIZES: 49-52-55-58-61
 FORKS: BIANCHI ACC-AG13 CARBON WITH STEEL STEERER
 HEADSET: FSA ORBIT X

MULTIPLE BUTTED ALUMINIUM ALLOY (7020)
 STRUCTURAL FOAM INJECTION
 SPECIFIC CYCLOCROSS GEOMETRY
 CUSTOM SIZE
 DEVELOPED WITH PROFESSIONAL RIDERS



MIS.

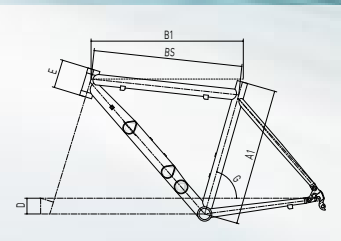
A1	B1	D	E	G
490	525	65	110	74°
520	530	65	110	74°
550	550	65	125	74°
580	560	65	140	74°
610	585	65	175	72,5°



SPECIAL JUNIOR 24"

SORA 8 SP (Y7B57),
COLOUR CK

GROUP:	SHIMANO SORA
CRANKSET:	MICHE YOUNG
HANDLEBARS:	ITM ROAD RACING
STEM:	HL-TDS-120-8
SEATPOST:	SP-232
WHEELS:	JOYTECH/ALEX



MIS.

A1	B1	BS	D	E	G
410	454	444	47	85	74°



> BUTTED ALUMINIUM ALLOY (7000 SERIES) > SPECIAL ANTI-CORROSION SURFACE TREATMENT > SPECIAL CHILDREN'S GEOMETRY

R

M

S

MTB RACING

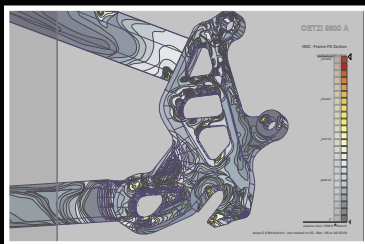
Lightness, stiffness, speed: these are the qualities the athletes value the most. The frames from the **Racing** range are identical to those by the athletes of the Bianchi Agos team, among whom is Julien Absalon, the current Olympic and World Champion.

Their experience turned into useful advice in designing both aggressive and powerful frames.

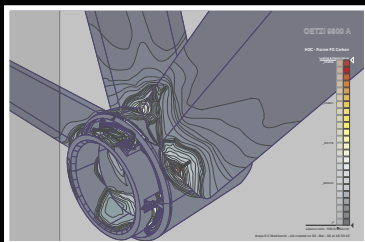
The **Detzi** series of frames is a complete one: aluminium, carbon and titanium, all featuring the Reparto Corse geometry, appreciated by the riders for its *responsiveness* and *compactness*.

Aluminium gets thinner thanks to Hyeralloy, the same used for our FG Lite, both tough and hard.

Upgraded bottom bracket, bigger and extensively CNC machined. A new design also for the drop outs which, like the bottom bracket, comes from FEM structural analysis. Carbon nanotechnology enhances the carbon fibre giving the Detzi Carbon a *weight* level of excellence.



FEM analysis at the rear dropouts



FEM analysis at the BB shell



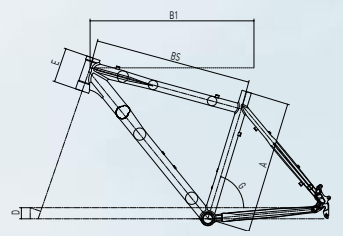
Cycling lovers will simply find the Titanium **model** irresistible, made from grade 9, 3Al2,5V titanium, exuding craftsmanship. The Racing geometry is the best compromise for performance, rigidity and comfort. Entirely manufactured by Reparto Corse in Treviglio and cared for even in the minutest details. Double butted tubes, TIG welding, precious titanium drop outs cut from solid ingot by means of CNC machines. You can't miss it!

RACING OETZI 9800 ALU

SRAM X.O DISC (Y7B61),
COLOUR KN

GROUP: SRAM X.O
CRANKSET: FSA TEAM ISSUE CARBON MEGA EXO
FORKS: ROCKSHOX SID TEAM
BRAKES: AVID JUICY CARBON DISC
HANDLEBARS: FSA K-FORCE FLAT CARBON
STEM: FSA DS 115C
SEATPOST: PMP CARBON
WHEELS: MAVIC CROSSMAX SL DISC

ALSO AVAILABLE THE OETZI 9200 ALU XT/LX DISC
(Y7B62)



MIS.

A	B1	BS	D	E	G
380	540	525	35	115	73°
430	570	546	35	115	73°
480	590	565	35	125	73°
530	615	593	35	135	73°



> TRIPLE BUTTED HYPERALLOY > CNC DROPOUT AND BB > SPECIAL BB OVERSIZED FOR RIGIDITY > STRUCTURAL FOAM INJECTION > CUSTOM SIZE GEOMETRY > LIGHT WEIGHT > SPECIFIC XC GEOMETRY > USED AND TESTED BY PROFESSIONAL RIDERS

R

M

S

R

M

S

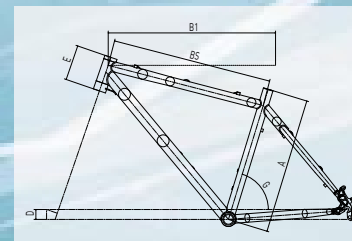
RACING OETZI 9800 TITANIUM

SRAM X.O DISC (Y7B60),
COLOUR TM

GROUP:	SRAM X.O
CRANKSET:	FSA TEAM ISSUE CARBON MEGA EXO
FORKS:	ROCKSHOX SID TEAM
BRAKES:	AVID JUICY CARBON DISC
HANDLEBARS:	FSA K-FORCE FLAT CARBON
STEM:	FSA OS 115C
SEATPOST:	PMP CARBON
WHEELS:	MAVIC CROSSMAX SL DISC



> DOUBLE BUTTED TITANIUM ALLOY (3AL/2,5V) > CNC DROPOUT > STRUCTURAL FOAM INJECTION > EXCELLENT ABSORPTION OF VIBRATIONS
> CUSTOM SIZE GEOMETRY > OPTIMUM RIGIDITY VS. COMFORT > SPECIFIC XC GEOMETRY > DEVELOPED WITH PROFESSIONAL RIDERS



MIS.

A1	B1	BS	D	E	G
380	540	525	35	115	73°
430	570	546	35	115	73°
480	590	565	35	125	73°
530	615	593	35	135	73°

RACING OETZI 9500 CARBON

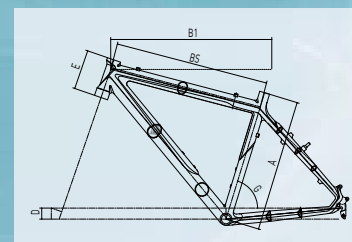
XTR/XT DISC (Y7B63),
COLOUR EN

GROUP:	SHIMANO XTR/XT
CRANKSET:	SHIMANO XT
FORKS:	FOX F 100 RL
BRAKES:	SHIMANO XT DISC
HANDLEBARS:	FSA XC-180 DS
STEM:	FSA OS 150 LX
SEATPOST:	PMP CARBON
WHEELS:	MAVIC CROSSTRAIL DISC

ALSO AVAILABLE THE OETZI 9300 CARBON XT/LX
DISC (Y7B64)



> CARBON MONOCOQUE DESIGN > CARBON NANO TECHNOLOGY > LIGHT WEIGHT > FAST AND EXCELLENT IN REACTION > SPECIFIC XC GEOMETRY
> USED AND TESTED BY PROFESSIONAL RIDERS



MIS.

A1	B1	BS	D	E	G
430	565	540	40	125	73°
480	585	560	40	125	73°
530	600	575	40	125	73°

**RACING
OETZI 9800 TITANIUM**

(X7B50) COLOUR TM

SIZES: 38-43-48-53
HEADSET: FSA NQ12AY-6



**RACING
OETZI 9000 CARBON**

(X7B52) COLOUR EN

SIZES: 43-48-53
HEADSET: FSA ORBIT Z5



**RACING
OETZI 9800 ALU**

(X7B51) COLOUR KN

SIZES: 38-43-48-53
HEADSET: FSA ORBIT Z5



R

M

S

MTB PERFORMANCE



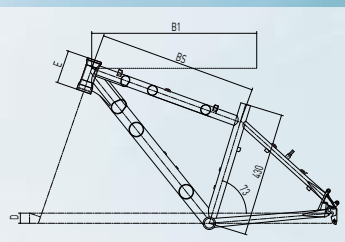
The **Performance** range is dedicated to a demanding public, a wide request both in motivation and targets. These bicycles share the same, race winning, geometry as the *Detzi* range, the masters of racing. The research into *performance* is a must allowing you to release your anger on different types of terrain: *Cross Country* with the **Mutt** and **Caal** range, *All Mountain* with the **Legor** and **Kavra** range all designed to be the best in those technical climbs. The frames feature triple butted aluminium alloy, created through Hydroforming techniques and with ambitious weight targets. *Quick uphill, practical and reactive*, designed to improve your performance with minimal extra effort. The suspension design is made with a strict cooperation with Renault Sport and is designed to decrease the suspension movement induced by pedalling. The result is less energy is wasted and better efficiency under pressure. Any magic? None, only the strength in your legs.



PERFORMANCE MUTT 7800

XTR MIX DISC (Y7B65),
COLOUR KW

GROUP: SHIMANO XTR MIX
 CRANKSET: FSA AFTERBURNER MEGA EXO
 FORKS: ROCKSHOX RECON 351 SOLO AIR
 BRAKES: SHIMANO LX DISC
 HANDLEBARS: FSA XC-282A
 SEATPOST: FSA XC-280
 STEAM: FSA 05-190LX
 WHEELS: MAVIC CROSSRIDE



MIS.

A	B1	BS	D	E	G
430	570	545	35	115	73°
480	590	565	35	125	73°
530	615	590	35	135	73°



> TRIPLE BUTTED ALUMINIUM ALLOY (7000 SERIES) > HYDROFORMED DOWN TUBE AND TOP TUBE > SMOOTH TIG WELDING > SPECIAL ANTI-CORROSION SURFACE TREATMENT > XC GEOMETRY > ALL ROUND XC PERFORMANCE



R

E

N

PERFORMANCE MUTT 7700

XT/LX DISC (Y7B66),
COLOUR PR

GROUP:	SHIMANO XT/LX
CRANKSET:	FSA MOTO MEGA EXO
FORKS:	ROCKSHOX TORA 302
BRAKES:	SHIMANO LX DISC
HANDLEBARS:	FSA XC-282A
SEATPOST:	FSA XC-280
STEAM:	FSA 05-190LX
WHEELS:	SHIMANO DEORE DISC/MAVIC XM 317

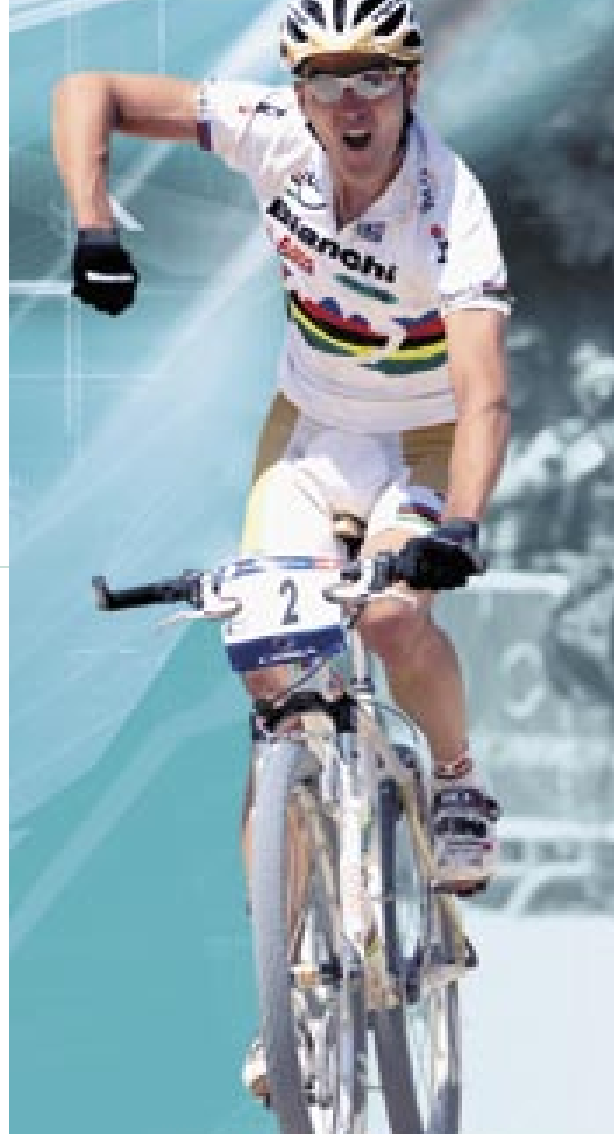
ALSO AVAILABLE IN COLOUR GH



PERFORMANCE MUTT 7400

LX/DEORE DISC (Y7B67),
COLOUR GH

GROUP:	SHIMANO LX/DEORE
CRANKSET:	FSA ALPHA DRIVE
FORKS:	ROCKSHOX DART 3
BRAKES:	SHIMANO DEORE DISC
HANDLEBARS:	FSA XC-282A
STEAM:	FSA 05-190LX
SEATPOST:	SP-222 ALLOY
WHEELS:	SHIMANO M-495SL/MAVIC XM 317





R

E

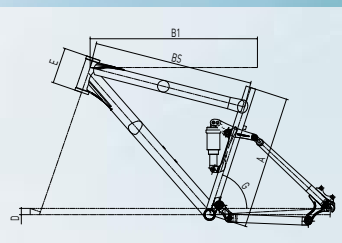
N

PERFORMANCE CAAL 8800

XC 100 XTR/XT DISC (Y7B73),
COLOUR KN

GROUP:	SHIMANO XTR/XT
CRANKSET:	FSA AFTERBURNER MEGA EXO
FORKS:	FOX F100 RL
REAR SHOCK:	FOX FLOAT R
BRAKES:	SHIMANO LX DISC
HANDLEBARS:	FSA XC-282A
STEM:	FSA OS 150LX
SEATPOST:	FSA 280 SL-280
WHEELS:	MAVIC CROSSTRAIL DISC

ALSO AVAILABLE THE CAAL 8600 XC 100
SRAM X-9/X-7 DISC (Y7B74)



MIS.

A	BS	B1	D	E	G
420	545	573	22	118	72°
470	572	590	22	127	72°
520	590	613	22	139	72°



> TRIPLE BUTTED ALUMINIUM ALLOY (6000 SERIES) > SPECIAL ANTI-CORROSION SURFACE TREATMENT > CSS SUSPENSION SYSTEM PATENT > HORST LINK > ANTI BOBBING AND NO SAG > XC GEOMETRY 100MM REAR TRAVEL

PERFORMANCE CAAL 8400

XC 100 XT/LX DISC (Y7B75),
COLOUR TG

GROUP:	SHIMANO XT/LX
CRANKSET:	FSA MOTO MEGA EXO
FORKS:	ROCKSHOX RECON 351 SOLO AIR
REAR SHOCK:	FOX FLOAT R
BRAKES:	SHIMANO LX DISC
HANDLEBARS:	FSA XC-282A
STEM:	FSA OS 150LX
SEATPOST:	FSA SL-280
WHEELS:	SHIMANO LX DISC/MAVIC XM 317

ALSO AVAILABLE THE CAAL 8200 XC 100 DEORE DISC
(Y7B76), COLOUR WS



R

M

S

R

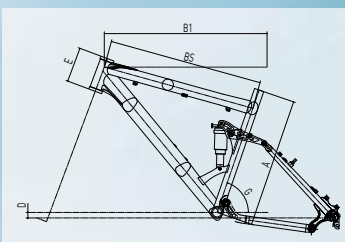
E

N

PERFORMANCE LEGOR S600

AM 130 XTR/XT DISC (Y7B77),
COLOUR MT

GROUP:	SHIMANO XTR/XT
CRANKSET:	SHIMANO XT
FORKS:	FOX 32 TALAS RL
REAR SHOCK:	FOX FLOAT R
BRAKES:	SHIMANO XT
HANDLEBARS:	FSA XC-282A
STEM:	FSA DS15DLX
SEATPOST:	FSA-SL-280
WHEELS:	SHIMANO XT/MAVIC XM317



MIS.

A	BS	B1	D	E	G
430	541	575	-20	118	71°
470	560	590	-20	127	71°
520	583	613	-20	139	71°



> TRIPLE BUTTED ALUMINIUM ALLOY (6000 SERIES) > SPECIAL ANTI-CORROSION SURFACE TREATMENT > CSS SUSPENSION SYSTEM PATENT > HORST LINK > ANTI BOBBING > ALL MOUNTAIN 130MM REAR TRAVEL

PERFORMANCE LEGOR 5400

AM 130 XT/LX DISC (Y7B78),
COLOUR MT

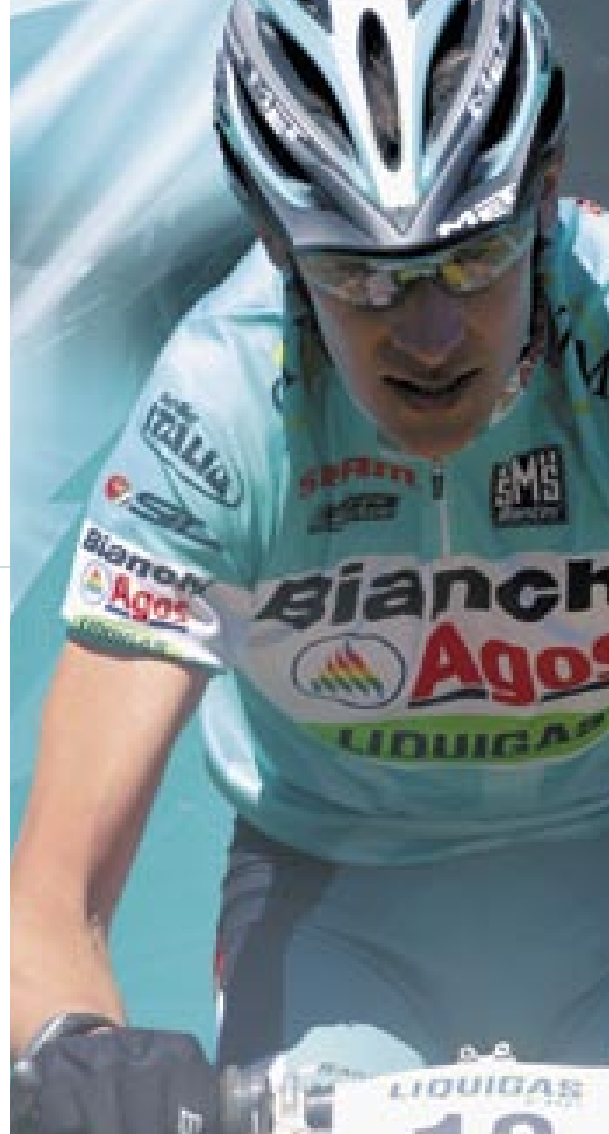
GROUP:	SHIMANO XT/LX
CRANKSET:	FSA MOTO MEGA EXO
FORKS:	ROCKSHOX REVELATION 426 DUAL AIR
REAR SHOCK:	ROCKSHOX BAR ADJUST
BRAKES:	SHIMANO DEORE DISC
HANDLEBARS:	FSA XC-282A
STEM:	FSA DS15DLX
SEATPOST:	FSA-SL-280
WHEELS:	SHIMANO DEORE DISC/MAVIC XM 317



PERFORMANCE LEGOR 5200

AM 130 DEORE DISC (Y7B79),
COLOUR PR

GROUP:	SHIMANO DEORE
CRANKSET:	FSA ALPHA DRIVE
FORKS:	ROCKSHOX TORA 318 U-TURN
REAR SHOCK:	ROCKSHOX BAR ADJUST
BRAKES:	SHIMANO MS45 MECHANICAL DISC
HANDLEBARS:	F3-AL LOW RISE
STEM:	DA-35 FORGED ALLOY
SEATPOST:	SP-151
WHEELS:	SHIMANO DEORE DISC/MACH 1 MX DISC



R

M

S

R

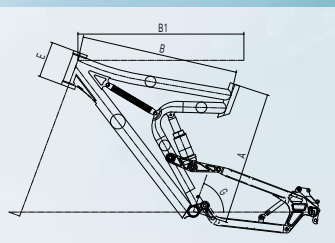
E

N

PERFORMANCE KAVRA S800

ENDURO 150 XT (Y6B67),
COLOUR MG

GROUP:	SHIMANO XT
CRANKSET:	SHIMANO XT
REAR SHOCK:	MANITOU SWINGER AIR 3
FORKS:	MANITOU NIXON SUPER
BRAKES:	SHIMANO XT DISC
HANDLEBARS:	FSA FR-270 RISER DS
STEM:	FSA FR-200 DS
SEATPOST:	FSA FR-270
WHEELS:	LX/MAVIC EX 729 DISC



MIS.

A	B	B1	E	G
430	535	575	120	71°
470	555	585	127	71°
520	582	605	139	71°



> BUTTED ALUMINIUM ALLOY (6000 SERIES) > CARBON REINFORCED FOR RIGIDITY > SPECIAL ANTI-CORROSION SURFACE TREATMENT > CSS SUSPENSION SYSTEM PATENT > HORST LINK > FLOATING DISC CALLIPER > ANTI BOBBING
> ENDURO GEOMETRY 150MM REAR TRAVEL

PERFORMANCE KAVRA S400

ENDURO 130 LX DEORE (Y6B68),
COLOUR MG

GROUP:	SHIMANO LX/DEORE
CRANKSET:	SHIMANO LX
REAR SHOCK:	ROCKSHOX BAR
FORKS:	MANITOU STANCE BLUNT
BRAKES:	SHIMANO DEORE DISC
HANDLEBARS:	FSA FR-330 DS
STEM:	FSA FR-230 DS
SEATPOST:	FSA FR-270
WHEELS:	DEORE/MAVIC EX 325 DISC

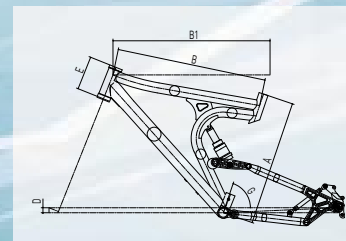


> BUTTED ALUMINIUM ALLOY (6000 SERIES) > SPECIAL ANTI-CORROSION SURFACE TREATMENT > CSS SUSPENSION SYSTEM PATENT > HORST LINK
> FLOATING DISC CALLIPER > ANTI BOBBING > ENDURO GEOMETRY 130MM REAR TRAVEL

PERFORMANCE KAVRA S200

ENDURO 130 DEORE (Y6B69),
COLOUR KW

GROUP:	SHIMANO DEORE
CRANKSET:	FSA ALPHA DRIVE
REAR SHOCK:	ROCKSHOX BAR
FORKS:	SUN TOUR SF-DURO D
BRAKES:	SHIMANO DEORE DISC
HANDLEBARS:	BIANCHI COMPONENTI F3-AL
STEM:	BIANCHI COMPONENTI OA-35
SEATPOST:	BIANCHI COMPONENTI SP-151
WHEELS:	DEORE/AMBRISIO KEBA



MIS.

A	B	B1	D	E	D
430	543	575	19	121	71°
470	562	590	19	127	71°
520	585	608	19	139	71°

R

M

S

PERFORMANCE MUTT ALU

(X7B53) COLOUR GH

SIZES: 43-48-53

HEADSET: FSA ZS-4 CUSTOM

ALSO AVAILABLE IN COLOURS PR AND KW



PERFORMANCE LEGOR ALL MOUNTAIN

FS (X7B55) COLOUR PR

SIZES: 43-47-52

HEADSET: FSA ORBIT ZS

ALSO AVAILABLE IN COLOUR MT



PERFORMANCE CRAL

XC FS (X7B54) COLOUR KN

SIZES: 42-47-52

HEADSET: FSA ORBIT ZS

ALSO AVAILABLE IN COLOURS TG AND WS



PERFORMANCE KAVRA ENDURO

150 (X6B55) COLOUR MG

SIZES: 43-47-52

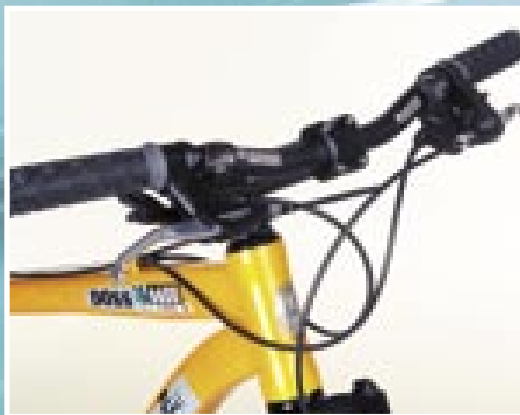
HEADSET: FSA ORBIT ZS





R
m
S

MTB LEISURE



The bicycle is a great means to stay fit and in touch with nature. With the mountain bike you can ride in a quiet and pleasant environment, away from today's stresses.

The **Leisure** range is designed to meet the requirements of the "easy" biker:

The geometry is *less aggressive*, focused on front end *control*, on *stability* and *comfort*.

The technical features of the frame: 6000 aluminium alloy, oversized sections, original design with triple butted tubes are qualities normally only reserved for top end categories. Weight is not crucial but it is given due consideration in order not to disappoint those who, day by day, wish to test themselves.

The weight target will be particularly appreciated by those who are not afraid of facing exacting courses. Five available finishing kits. You only need to think about your training and having fun.

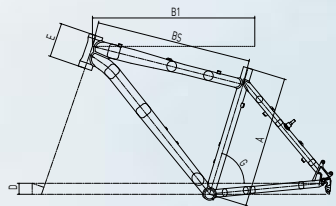


LEISURE DOSS 6600

DEORE DISC (Y7B68),
COLOUR OK

GROUP: SHIMANO DEORE
CRANKSET: FSA ALPHA DRIVE
FORKS: ROCKSHOX DART 2
BRAKES: SHIMANO MS45 MECHANICAL DISC
HANDLEBARS: F3-AL LOW RISE
STEM: DA-35 3-D FORGED ALLOY
SEATPOST: SP-222 ALLOY
WHEELS: SHIMANO M-495L/MACH 1 MX DISC

ALSO AVAILABLE IN COLOUR KW



MIS.

A	B1	BS	D	E	G
380	540	522	40	110	73°
430	570	546	40	120	73°
480	590	565	40	130	73°
530	615	592	40	140	73°



> TRIPLE BUTTED ALUMINIUM ALLOY (6000 SERIES) > SPECIAL SQUARE SECTIONS > SMOOTH TIG WELDING > SPECIAL ANTI-CORROSION SURFACE TREATMENT > COMFORT GEOMETRY POSITION > RECREATIONAL FAST RIDING

R

M

S

R

E

N

LEISURE DOSS 6400

DEORE V-BRAKES (Y7B69),
COLOUR MT

GROUP:	SHIMANO DEORE
CRANKSET:	FSA ALPHA DRIVE
FORKS:	ROCKSHOX DART 2
BRAKES:	LEE CHI TX-121
HANDLEBARS:	F3-AL LOW RISE
STEM:	DA-35 3-D FORGED ALLOY
SEATPOST:	SP-222 ALLOY
WHEELS:	SHIMANO M-495L/MACH 1, 210 XC-TYPE

ALSO AVAILABLE IN COLOUR RL



LEISURE DOSS 6100

ALIVIO DISC (Y7B70),
COLOUR PB

GROUP:	SHIMANO ALIVIO
CRANKSET:	FSA DYNADRIVE
FORKS:	SUN TOUR XCT-LO
BRAKES:	SHIMANO M-415 MECHANICAL DISC
HANDLEBARS:	F3-AL LOW RISE
STEM:	HL TDS-C41-8
SEATPOST:	SP-222 ALLOY
WHEELS:	SHIMANO RM-65/MACH 1, 2.30 DISC

ALSO AVAILABLE IN COLOUR MT



LEISURE DOSS 4800

ALIVIO MIX V-BRAKES (Y7B71),
COLOUR KW

GROUP: SHIMANO ALIVIO MIX
CRANKSET: RPM ALB32B
FORKS: SUN TOUR SF-XCT
BRAKES: LEE CHI TX-121
HANDLEBARS: F3-AL LOW RISE
STEM: HL TDS-C41-8
SEATPOST: SP-222 ALLOY
WHEELS: SHIMANO RM-30/JDYTECH/MACH 1, 210 XC
ALSO AVAILABLE IN COLOURS RL AND OK



LEISURE DOSS 4600

ACERA MIX V-BRAKES (Y7B72),
COLOUR RL

GROUP: SHIMANO ACERA MIX
CRANKSET: DETAI DT-1
FORKS: SUN TOUR SF-XCT
BRAKES: LEE CHI TX-121
HANDLEBARS: F3-AL LOW RISE
STEM: HL TDS-C41-8
SEATPOST: SP-222 ALLOY
WHEELS: SHIMANO RM-30/JDYTECH/SPECTRA
ALSO AVAILABLE IN COLOURS KW AND OK



R

M

S

MTB DIRT



Times change and so does cycling. Some people love riding for miles on end, while others love to *jump and have fun* and let time go by without looking at their watch. The **Dirt** series frames are made in aluminium, solid and compact, designed to withstand the stresses and abuse caused by jumping. The high front end makes it easier to control the path ahead, while the 100-mm fork dampens all shocks without any problem. The main triangle is compact and re-enforced, designed to make the most of the *agility* and *sprint* qualities in tight spaces, qualities that are vital when one thinks and acts in just a few seconds.

Nothing to say about the components as they are same found on "true" mountain bikes. Disc brakes, double chainsets and excellent gear ratios so that one can approach the *off-road* world in an informal and fun way. Classic colours and trendy graphics, inspired by that urban feel.



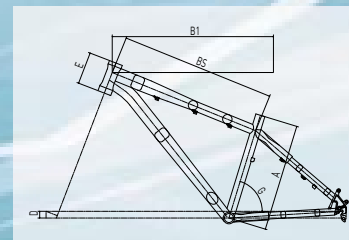
DIRT BIG ROO DIRT

DEORE DISC (Y7B80),
COLOUR UR

GROUP:	SHIMANO DEORE
CRANKSET:	TRUATIV HUSSEFELT HUSSE ROCK G
FORKS:	MARZOCCHI DIRT JAM PRO
BRAKES:	SHIMANO DEORE DISC
HANDLEBARS:	TRUATIV HUSSEFELT
SEATPOST:	SELCOF 31N
WHEELS:	SHIMANO DEORE DISC/MACH 1 MX DISC



> TRIPLE BUTTED ALUMINIUM ALLOY (7000 SERIES) > SPECIAL SQUARE SECTIONS > CNC YOKES FOR SEAT AND CHAIN STAYS > SUPER-HIGH RIGIDITY
> ANTI-CORROSION SURFACE TREATMENT > SPECIFIC JUMP GEOMETRY



MIS.

A	B1	B5	D	E	G
350	560	544	25	110	73°
400	600	576	25	125	73°

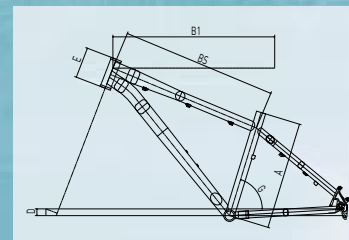
DIRT RED ROO DIRT

ALIVIO DISC (Y7B81),
COLOUR PR

GROUP:	SHIMANO ALIVIO
CRANKSET:	TRUATIV RUKTION 3.0
FORKS:	SUN TOUR SF7-XCM
BRAKES:	SHIMANO M-415 MECHANICAL DISC
HANDLEBARS:	AL-198FDV RISE
STEM:	HL TDS-D365-8
SEATPOST:	SP-222 ALLOY
WHEELS:	SHIMANO RM-65/MACH 1, 2.30 DISC



> BUTTED ALUMINIUM ALLOY (7000 SERIES) > SPECIAL SQUARE SECTIONS > HIGH RIGIDITY > ANTI-CORROSION SURFACE TREATMENT > SPECIFIC JUMP GEOMETRY



MIS.

A	B1	B5	D	E	G
350	560	544	25	105	73°
400	600	576	25	115	73°

R

M

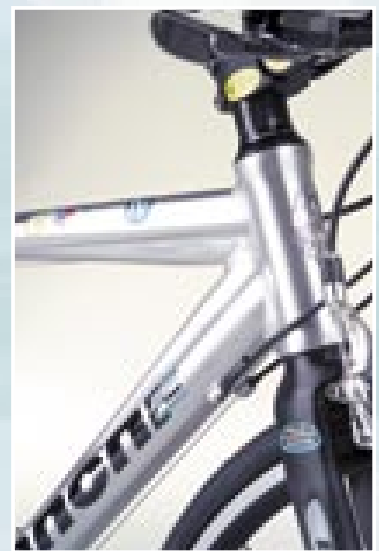
S

SPORT CAMALEONTE

Sports bicycles, before the Specialissime, represented the *entrance level into the world of cycling*. Not everyone can appreciate the geometry and set-up of a sports bikes.

Camaleonte is the true example of a sports bike without limits: suitable for city and recreational use, which lends itself to "serious" pedalling, during those long weekend rides. The frame is made entirely from double butted aluminium alloy, while the fork is in carbon or aluminium, depending on the model. The riding position is not aggressive, and the flat handlebars give the right compromise between *performances and comfort*.

The components make the most of the *hybrid nature* of the Camaleonte: the chainset features three rings, for a wider gearing, and in the more advanced model it is kitted out with the classic 10-speed rear gear to allow it to easily go beyond standard limits. Special attention is paid to the weight, either through the city traffic when you need to be quick and dynamic or when going uphill without running out of breath.

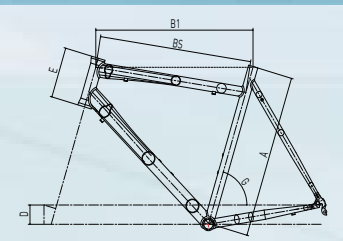


CAMALEONTE CAMALEONTE IV

105 10 SP TRIPLE (Y7B91),
COLOUR GH

GROUP: SHIMANO 105
CRANKSET: FSA OMEGA MEGA EXO
FORKS: BIANCHI CARBON
HANDLEBARS: ALLOY
STEM: MA-527 ADJUSTABLE
WHEELS: SHIMANO WH-R500

ALSO AVAILABLE IN COLOURS KW, CK AND THE
CAMALEONTE III TIAGRA 9 SP TRIPLE (Y7B92)



MIS.

A1	B1	BS	D	E	G
430	520	502	65	100	74,5°
480	540	523	65	110	74°
530	560	547	65	125	73,5°
580	585	574	65	155	73°



> TRIPLE BUTTED ALUMINIUM ALLOY (7000 SERIES) > HYDROFORMED DOWN TUBE AND TOP TUBE > SMOOTH TIG WELDING > SPECIAL ANTI-CORROSION SURFACE TREATMENT > CALLIPER BRAKES > SPECIFIC SPORT GEOMETRY



R

E

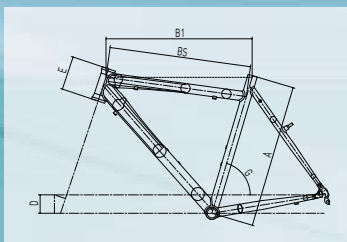
S

CAMALEONTE CAMALEONTE II

SORA 8 SP TRIPLE (Y7B93),
COLOUR KW

GROUP: SHIMANO SORA
CRANKSET: SHIMANO SORA
FORKS: ALLOY
HANDLEBARS: ALLOY
STEM: MA-527 ADJUSTABLE
WHEELS: JOYTECH/AMBROSIO

ALSO AVAILABLE IN COLOURS GH AND CK



MIS.

A1	B1	BS	D	E	G
430	520	501	65	100	74,5°
480	540	521	65	110	74°
530	560	544	65	125	73,5°
580	585	570	65	155	73°



> TRIPLE BUTTED ALUMINIUM ALLOY (7000 SERIES) > HYDROFORMED DOWN TUBE AND TOP TUBE > SMOOTH TIG WELDING > SPECIAL ANTI-CORROSION SURFACE TREATMENT > V-BRAKES > SPECIFIC SPORT GEOMETRY



R
M
S

SPORT T-ROAD



SPORT T-ROAD

The bicycle is the fastest means of city transport.

Clean, easy to park, nimble. The bikes in the **T-road** series combine *elegance and easy manoeuvrability*, to boost your sense of freedom. **Via delle Battaglie** is the *sporty one* of the family, the most "versatile", designed to challenge the city traffic but also at ease on those weekend rides, when you have time on your hands and the horizon is far away. The frame is made from aluminium alloy with a classic sports geometry.

With a wide choice of gears for either easy pedalling or those fast moments. **Viale Abruzzi**, instead, is conceived for use in the city. It has a relaxed and easy position thanks to its adjustable stem. Gears are 'easier', the other components are conceived to make cycling simple and practical, even when carrying luggage. Now pedalling in the city is easy, and even more so with Bianchi.



R

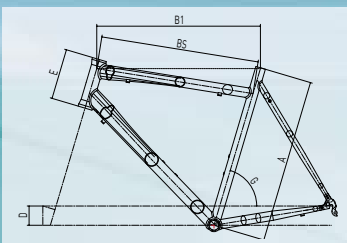
E

S

T-ROAD VIA DELLE BATTAGLIE

SORA 8 SP DOUBLE (Y7B95),
COLOUR CT

GROUP: SHIMANO SORA
CRANKSET: SHIMANO SORA
FORKS: BIANCHI CARBON
HANDLEBARS: ITM CONDOR
STEM: MA-527 ADJUSTABLE
WHEELS: SHIMANO SORA/AMBROSIO



MIS.

A	B1	BS	D	E	G
430	520	502	65	100	74,5°
480	540	523	65	110	74°
530	560	547	65	125	73,5°
580	585	574	65	155	73°



> TRIPLE BUTTED ALUMINIUM ALLOY (7000 SERIES) > HYDROFORMED DOWN TUBE AND TOP TUBE > SMOOTH TIG WELDING > SPECIAL ANTI-CORROSION SURFACE TREATMENT > V-BRAKES > SPECIFIC SPORT GEOMETRY

T-ROAD VIALE ABRUZZI man

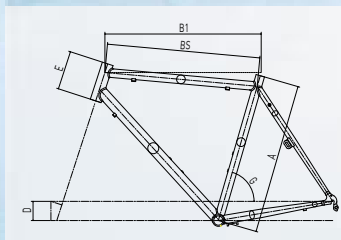
SHIMANO 2200 8 SP DOUBLE (Y7B96),
COLOUR ED

GROUP: SHIMANO 2200
CRANKSET: SHIMANO 2200
FORKS: CRMO
HANDLEBARS: ITM ALLOY T-ROAD
STEM: MA-527 ADJUSTABLE
WHEELS: JOYTECH/MACH 1 RJ PROJECT

ALSO AVAILABLE IN COLOUR CK



> ALUMINIUM ALLOY (7000 SERIES) > ROUND SECTION TUBES > SPECIAL ANTI-CORROSION SURFACE TREATMENT > CALLIPER BRAKES > SPECIFIC CITY GEOMETRY



MIS.SLP

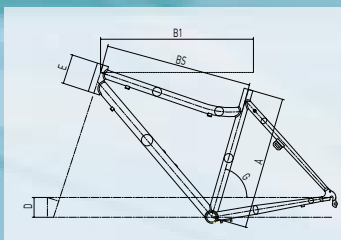
A	B1	BS	D	E	G
470	540	506	65	110	74°
510	555	524	65	125	73,5°
550	570	558	65	145	73°

T-ROAD VIALE ABRUZZI LADY

SHIMANO 2200 8 SP DOUBLE (Y7B97),
COLOUR CK

GROUP: SHIMANO 2200
CRANKSET: SHIMANO 2200
FORKS: CRMO
HANDLEBARS: ITM ALLOY T-ROAD
STEM: MA-527 ADJUSTABLE
WHEELS: JOYTECH/MACH 1 RJ PROJECT

ALSO AVAILABLE IN COLOUR ED



MIS.SLP

A	B1	BS	D	E	G
430	525	506	65	100	74,5°
470	540	520	65	110	74°

R

M

S

COMPONENTS	DRIVETRAIN	WHEELS	FRAMESET					
			MODEL CODE	FRAME	FORK COLOURS	SHIFTERS REAR DERAILLEUR FRONT DERAILLEUR CRANKSET CHAIN SPROCKET	WHEELS REAR HUB FRONT HUB RIMS TIRE	HEADSET STEM HANDLEBAR SEATPOST SADDLE BRAKES PEDALS WATERBOTTLE HANGER
			B4P 928 Carbon Lugged Ultegra 10 sp Double Y7B04	B4P 928 Carbon Lugged Sram Rival 10 sp Compact Y7B35	B4P 1885 TB Hydro/Carbon Dura Ace 10 sp Double Y7B36	B4P 1885 TB Hydro/Carbon Ultegra 10 sp Double Y7B37	B4P 1885 TB Hydro/Carbon Ultegra 10 s Compact Y7B38	B4P 1885 TB Hydro/Carbon 105 10 s Double Y7B39
			928 CARBON Lugged - sloping geometry sizes 49>63 x 1cm Bianchi FFV Full Carbon 11/8" EC-EO	928 CARBON Lugged - sloping geometry sizes 49>63 x 1cm Bianchi FFV Full Carbon 11/8" EC-EO	1885 Alu-Carbon - sloping geometry sizes 49-51-53-55-57-59-61-63 Bianchi FLN Carbon/Al 11/8" CK-ED	1885 Alu-Carbon - sloping geometry sizes 49-51-53-55-57-59-61-63 Bianchi FLN Carbon/Al 11/8" CK-ED	1885 Alu-Carbon - sloping geometry sizes 49-51-53-55-57-59-61-63 Bianchi FLN Carbon/Al 11/8" CK-ED	1885 Alu-Carbon - sloping geometry sizes 49-51-53-55-57-59-61-63 Bianchi FLN Carbon/Al 11/8" CK-ED
			Shimano ULTEGRA Shimano ULTEGRA Shimano ULTEGRA FSA SL-K MegaExo Carbon 53/39 Shimano ULTEGRA Shimano ULTEGRA 12/25	Sram RIVAL Shimano DURA ACE Shimano DURA ACE Sram RIVAL OCT Open Core Tecnologia 50/34 Sram PC-1090 Sram OG-170 12/26	Shimano DURA ACE Shimano DURA ACE Shimano DURA ACE FSA SL-K MegaExo Carbon 53/39 Shimano DURA ACE Shimano DURA ACE 12/25 Shimano DURA ACE	Shimano ULTEGRA Shimano ULTEGRA Shimano ULTEGRA Shimano ULTEGRA 53/39 Shimano ULTEGRA Shimano ULTEGRA 12/25	Shimano ULTEGRA Shimano ULTEGRA Shimano ULTEGRA Shimano FC-R700 Compact 50/34 Shimano ULTEGRA Shimano ULTEGRA 12/25	Shimano 105 Shimano ULTEGRA Shimano 105 Shimano 105 FSA GOSSAMER MegaExo Double 53/39 KMC DX10SC Shimano 105 12/25
			Mavic KSYRIUM ELITE silver - - -	Mavic KSYRIUM ELITE silver - - -	Mavic KSYRIUM EQUIPE silver - - -	Mavic AKSIUM silver - - -	Mavic AKSIUM silver - - -	Mavic AKSIUM silver - - -
			Continental GRAND PRIX 4-Season 700x23	Continental GRAND PRIX 4-Season 700x23	Continental GRAND PRIX 4-Season 700x23	Continental ULTRA SPORT 23x622 rigid	Continental ULTRA SPORT 23x622 rigid	Continental ULTRA SPORT 23x622 rigid
			FSA ORBIT CE PLUS ITM 4-EVER Super Over, Ergal 7075/carbon 3K ITM 4-EVER Super Over, Ergal 7075 / carbon 3K ITM 4-EVER Carbon 31,6mm	FSA ORBIT CE PLUS ITM 4-EVER Super Over, Ergal 7075/carbon 3K ITM 4-EVER Super Over, Ergal 7075 / carbon 3K ITM 4-EVER Carbon 31,6mm	FSA ZS4-CUSTOM ITM VISIA 3D Forged Lite Alu /Carbon ITM VISIA WING Shape Alu /Carbon ITM VISIA Alu/Carbon 31,6mm	FSA ZS4-CUSTOM ITM VISIA 3D Forged Lite Alu/Carbon ITM VISIA WING Shape Alu/Carbon ITM VISIA Alu/Carbon 31,6mm	FSA ZS4-CUSTOM ITM VISIA 3D Forged Lite Alu/Carbon ITM VISIA WING Shape Alu/Carbon ITM VISIA Alu/Carbon 31,6mm	FSA ZS4-CUSTOM ITM VISIA 3D Forged Lite Alu/Carbon ITM VISIA WING Shape Alu/Carbon ITM VISIA Alu/Carbon 31,6mm
			San Marco ASPIDE Shimano ULTEGRA NO	San Marco ASPIDE Sram RIVAL NO	San Marco BLAZE PRO Shimano DURA ACE NO	San Marco BLAZE PRO Shimano ULTEGRA NO	San Marco BLAZE PRO Shimano ULTEGRA NO	San Marco BLAZE PRO Shimano 105 NO
			Bianchi Carbon DR.DOBERMANN	Bianchi Carbon DR.DOBERMANN	Aluminium black	Aluminium black	Aluminium black	Aluminium black
			B4P 1885 TB Hydro/Carbon 105 10 s Triple Y7B40	B4P 1885 TB Hydro/Carbon Veloce 10 s Double Y7B06	C2C 928 Carbon Record 10 s Compact Y7B14	C2C 928 Carbon Chorus 10 s Compact Y7B15	C2C 928 Carbon Dura Ace 10 s Compact Y7B16	C2C 928 Carbon Ultegra 10 s Compact Y7B01
			1885 Alu-Carbon - sloping geometry sizes 49-51-53-55-57-59-61-63 Bianchi FLN Carbon/Al 11/8" CK-ED	1885 Alu-Carbon - sloping geometry sizes 49-51-53-55-57-59-61-63 Bianchi FLN Carbon/Al 11/8" CK-ED	928 CARBON Monocoque - sloping geometry sizes 50-53-55-58-61 Bianchi FF9 Full Carbon 11/8" CS	928 CARBON Monocoque - sloping geometry sizes 50-53-55-58-61 Bianchi FF9 Full Carbon 11/8" CS-CH	928 CARBON Monocoque - sloping geometry sizes 50-53-55-58-61 Bianchi FF9 Full Carbon 11/8" CS	928 CARBON Monocoque - sloping geometry sizes 50-53-55-58-61 Bianchi FF9 Full Carbon 11/8" CS-CH
			Shimano 105 Shimano 105 Shimano 105 triple FSA GOSSAMER MegaExo Triple 50/39/30 KMC DX10SC	Campagnolo VELOCETM QS™ / ESCAPE™ 10s Campagnolo VELOCETM Campagnolo VELOCETM QS™ Campagnolo VELOCETM ULTRA-TORQUE™ 53/39 KMC DX10SC	Campagnolo RECORD™ QS™ 10s Ergopower™ Campagnolo RECORD™ Campagnolo RECORD™ QS™ for CT™ FSA SL-K MegaExo Compact Carbon 50/34 KMC DX10SC	Campagnolo CHORUSTM QS™ 10s Ergopower™ Campagnolo CHORUSTM CHORUSTM QS™ for CT™ FSA OMEGA CARBON PRO MegaExo Compact 50/34 KMC DX10SC	Shimano DURA ACE Shimano DURA ACE Shimano DURA ACE FSA SL-K MegaExo Compact - Carbon 50/34 KMC DX10SC	Shimano ULTEGRA Shimano ULTEGRA Shimano ULTEGRA FSA OMEGA CARBON PRO MegaExo Compact 50/34 KMC DX10SC
			Shimano 105 12/25 Mavic AKSIUM silver - - -	Campagnolo VELOCETM UDTM 12/25 Campagnolo KHAMSIN black - - -	Campagnolo CHORUSTM UD™ Ti 12/25 Campagnolo ZONDA™ silver - - -	Campagnolo CENTAUR™ UD™ 12/25 Campagnolo SCIROCCO™ silver - - -	Shimano ULTEGRA 12/25 Mavic KSYRIUM ELITE silver - - -	Shimano 105 12/25 Mavic AKSIUM silver - - -
			Continental ULTRA SPORT 23x622 rigid	Continental ULTRA SPORT 23x622 rigid	Continental GRAND PRIX 4-Season 700x23	Continental GRAN PRIX 23x622 foldable	Continental GRAND PRIX 4-Season 700x23	Continental GRAN PRIX 23x622 foldable
			FSA ZS4-CUSTOM ITM VISIA 3D Forged Lite Alu /Carbon ITM VISIA WING Shape Alu /Carbon ITM VISIA Alu/Carbon 31,6mm	FSA ZS4-CUSTOM DA-32 CF 3D forged alu/carbon ITM LITE Luxe WING Shape SP-728 CF Alu/Carbon 31,6mm San Marco BLAZE PRO	FSA ORBIT CE PLUS FSA CARBON PRO Alu/Carbon FSA K-WING CARBON AERO FSA SL280 - Carbon Pro 31,6mm FiZi:k ALIANTE GAMMA TI	FSA ORBIT CE PLUS FSA CARBON PRO Alu/Carbon FSA K-WING CARBON AERO FSA SL280 - Carbon Pro 31,6mm FiZi:k ALIANTE DELTA	FSA ORBIT CE PLUS FSA CARBON PRO Alu/Carbon FSA K-WING CARBON AERO FSA SL280 - Carbon Pro 31,6mm FiZi:k ALIANTE DELTA	FSA ORBIT CE PLUS FSA CARBON PRO Alu/Carbon FSA K-WING CARBON AERO FSA SL280 - Carbon Pro 31,6mm FiZi:k ALIANTE DELTA
			San Marco BLAZE PRO Shimano 105 NO	San Marco BLAZE PRO Campagnolo VELOCETM-D SKELETON™ NO	Campagnolo RECORD™-D SKELETON™ NO	Campagnolo CHORUSTM-D SKELETON™ NO	Shimano DURA ACE NO	Shimano DURA ACE NO
			Aluminium black	Aluminium black	Bianchi Carbon DR.DOBERMANN	Elite CIUSSI GEL black	Bianchi Carbon DR.DOBERMANN	Elite CIUSSI GEL black

COMPONENTS	DRIVETRAIN	WHEELS	FRAMESET					
			MODEL CODE	FRAME	FORK COLOURS			
			C2C 928 Carbon Ultegra 10 s Triple Y7B17	C2C 928 Carbon 105 10 s Compact Y7B02	C2C 928 Carbon 105 10 s Triple Y7B58	C2C S9 MATTA Titanium Dura Ace 10 s Compact Y7B18	C2C S9 MATTA Titanium Ultegra 10 s Compact Y7B19	C2C S9 MATTA Titanium 105 10 s Compact Y7B20
			928 CARBON Monocoque - sloping geometry sizes 50-53-55-58-61 Bianchi FF9 Full Carbon 11/8"	928 CARBON Monocoque - sloping geometry sizes 50-53-55-58-61 Bianchi FL5 Carbon/Al 11/8" CS-CH	928 CARBON Monocoque - sloping geometry sizes 50-53-55-58-61 Bianchi FL5 Carbon/Al 11/8" CS-CH	Titanium - sloping geometry sizes 50-53-55-58-61 Bianchi FF9 Full Carbon 11/8" TC	Titanium - sloping geometry sizes 50-53-55-58-61 Bianchi FF9 Full Carbon 11/8" TC	Titanium - sloping geometry sizes 50-53-55-58-61 Bianchi FL5 Carbon/Al 11/8" TC
			SHIFTERS Shimano ULTEGRA REAR DERAILLEUR Shimano ULTEGRA FRONT DERAILLEUR Shimano ULTEGRA TRIPLE CRANKSET FSA OMEGA CARBON PRO MegaExo Triple 50/39/30 CHAIN KMC DX10SC SPROCKET Shimano 105 12/25	Shimano 105 Shimano 105 Shimano 105 Shimano 105 FSA GOSSAMER MegaExo Compact 50/34 KMC DX10SC Shimano 105 12/25	Shimano 105 Shimano 105 Shimano 105 triple FSA GOSSAMER MegaExo Triple 50/39/30 KMC DX10SC Shimano 105 12/25	Shimano DURA ACE Shimano DURA ACE Shimano DURA ACE FSA SL-K MegaExo Compact - Carbon 50/34 KMC DX10SC Shimano ULTEGRA 12/25 Mavic KSYRIUM ELITE silver	Shimano ULTEGRA Shimano ULTEGRA Shimano ULTEGRA FSA OMEGA CARBON PRO MegaExo Compact 50/34 KMC DX10SC Shimano 105 12/25	Shimano 105 Shimano ULTEGRA Shimano 105 FSA GOSSAMER MegaExo Compact 50/34 KMC DX10SC Shimano 105 12/25
			WHEELS Mavic AKSIUM silver REAR HUB - FRONT HUB - RIMS - TIRE Continental GRAN PRIX 23x622 foldable	Mavic AKSIUM silver - - - Continental GRAN PRIX 23x622 foldable	Mavic AKSIUM silver - - - Continental GRAN PRIX 23x622 foldable	Mavic KSYRIUM ELITE silver - - - Continental GRAND PRIX 4-Season 700x23	Mavic KSYRIUM EQUIPE silver - - - Continental GRAN PRIX 23x622 foldable	Mavic AKSIUM silver - - - Continental GRAN PRIX 23x622 foldable
			HEADSET FSA ORBIT CE PLUS STEM FSA CARBON PRO Alu/Carbon HANDLEBAR FSA K-WING CARBON AERO SEATPOST FSA SL280 - Carbon Pro 31,6mm SADDLE Fi'Zi:k ALIANTE DELTA BRAKES Shimano ULTEGRA PEDALS NO WATERBOTTLE HANGER Elite CIUSSI GEL black	FSA ORBIT CE PLUS DA-32 CF 3D forged alu/carbon ITM Lite Luxe Wing Shape SP-728 CF Alu/Carbon 31,6mm Fi'Zi:k ALIANTE DELTA Shimano 105 NO Elite CIUSSI GEL black	FSA ORBIT CE PLUS DA-32 CF 3D forged alu/carbon ITM Lite Luxe Wing Shape SP-728 CF Alu/Carbon 31,6mm Fi'Zi:k ALIANTE DELTA Shimano 105 NO Elite CIUSSI GEL black	FSA ORBIT X - Threadless FSA CARBON PRO Alu/Carbon FSA K-WING CARBON AERO FSA SL280 - Carbon Pro 31,6mm Fi'Zi:k ALIANTE GAMMA TI Shimano DURA ACE NO Bianchi Carbon DR.DOBERMANN	FSA ORBIT X - Threadless FSA CARBON PRO Alu/Carbon FSA K-WING CARBON AERO FSA SL280 - Carbon Pro 31,6mm Fi'Zi:k ALIANTE DELTA Shimano ULTEGRA NO Elite CIUSSI GEL black	FSA ORBIT X - Threadless FSA CARBON PRO Alu/Carbon ITM Lite Luxe Wing Shape SP-728 CF Alu/Carbon 31,6mm Fi'Zi:k ALIANTE DELTA Shimano 105 NO Elite CIUSSI GEL black
COMPONENTS	DRIVETRAIN	WHEELS	FRAMESET					
			MODEL CODE	FRAME	FORK COLOURS			
			C2C VIA NIRONE 7 Alu Carbon Ultegra/105 10 sp Double Y7B07	C2C VIA NIRONE 7 Alu Carbon Ultegra/105 10 sp Triple Y7B08	C2C VIA NIRONE 7 Alu Carbon Veloce mix 10 sp Double Y7B42	C2C VIA NIRONE 7 Alu Carbon Veloce mix 10 sp Compact Y7B43	C2C VIA NIRONE 7 Alu Mirage mix 10 sp Double Y7B44	C2C VIA NIRONE 7 Alu Mirage/Race mix 10 sp Triple Y7B11
			VIA NIRONE 7 Alu/Carbon - sloping geometry sizes 50-53-55-57-59-61 Bianchi FL5 Carbon/Al 11/8" CK-6l	VIA NIRONE 7 Alu/Carbon - sloping geometry sizes 50-53-55-57-59-61 Bianchi FL5 Carbon/Al 11/8" CK-6l	VIA NIRONE 7 Alu/Carbon - sloping geometry sizes 50-53-55-57-59-61 Bianchi FL5 Carbon/Al 11/8" CK-6l	VIA NIRONE 7 Alu/Carbon - sloping geometry sizes 50-53-55-57-59-61 Bianchi FL5 Carbon/Al 11/8" CK-KT	TC07-VIA NIRONE 7 Alu - sloping geometry sizes 46-50-53-55-57-59-61 Bianchi FL5 Carbon/Al 11/8" CK-KT	TC07-VIA NIRONE 7 Alu - sloping geometry sizes 46-50-53-55-57-59-61 Bianchi FL5 Carbon/Al 11/8" CK-KT
			SHIFTERS Shimano ULTEGRA REAR DERAILLEUR Shimano ULTEGRA FRONT DERAILLEUR Shimano 105 CRANKSET FSA GOSSAMER MegaExo Double 53/39 CHAIN KMC DX10SC SPROCKET Shimano 105 12/25	Shimano ULTEGRA Shimano ULTEGRA Shimano 105 triple FSA GOSSAMER MegaExo Triple 50/39/30 KMC DX10SC Shimano 105 12/25	Shimano ULTEGRA Shimano ULTEGRA Shimano 105 triple FSA GOSSAMER MegaExo Double 53/39 KMC DX10SC Fac Michelin PRIMATO 12/25	Campagnolo VELOCE™ QS™ / ESCAPE™ 10s Ergopower™ Campagnolo VELOCE™ Campagnolo VELOCE™ QS™ FSA GOSSAMER MegaExo Compact 50/34 KMC DX10SC Fac Michelin PRIMATO 12/25	Campagnolo MIRAGE™ QS™ / ESCAPE™ 10s Campagnolo MIRAGE™ Campagnolo VELOCE™ QS™ FSA GOSSAMER MegaExo Double 53/39 KMC DX10SC Fac Michelin PRIMATO 12/25	
			WHEELS Shimano WH-R500 REAR HUB - FRONT HUB - RIMS - TIRE Continental ULTRA SPORT 23x622 rigid	Shimano WH-R500 - - - Continental ULTRA SPORT 23x622 rigid	Fac Michelin RACING 28h silver anodized Fac Michelin RACING 28h silver anodized Ambrosio Aluminium 6060T silver anodized Continental ULTRA SPORT 23x622 rigid	Fac Michelin RACING 28h silver anodized Fac Michelin RACING 28h silver anodized Ambrosio Aluminium 6060T silver anodized Continental ULTRA SPORT 23x622 rigid	Fac Michelin RACING 28h silver anodized Fac Michelin RACING 28h silver anodized Ambrosio Aluminium 6060T silver anodized Continental ULTRA SPORT 23x622 rigid	Fac Michelin RACING 28h silver anodized Fac Michelin RACING 28h silver anodized Ambrosio Aluminium 6060T silver anodized Continental ULTRA SPORT 23x622 rigid
			HEADSET FSA Z54-CUSTOM STEM DA-32 3D forged alloy HANDLEBAR ITM Lite Luxe Wing Shape SEATPOST SP-222 6061 alloy 31,6mm San Marco PONZA m cr-mo SADDLE Bianchi RC-461 E BRAKES NO PEDALS NO WATERBOTTLE HANGER Aluminium black	FSA Z54-CUSTOM DA-32 3D forged alloy ITM Lite Luxe Wing Shape SP-222 6061 alloy 31,6mm Bianchi RC-461 E NO Aluminium black	FSA Z54-CUSTOM DA-32 3D forged alloy ITM Lite Luxe Wing Shape SP-222 6061 alloy 31,6mm San Marco PONZA m cr-mo Bianchi RC-461 E NO Aluminium black	FSA Z54-CUSTOM DA-32 3D forged alloy ITM Lite Luxe Wing Shape SP-222 6061 alloy 31,6mm San Marco PONZA m cr-mo Bianchi RC-461 E NO Aluminium black	FSA Z54-CUSTOM DA-32 3D forged alloy ITM 300 SuperOver SP-222 6061 alloy 31,6mm San Marco PONZA C] steel Bianchi RC-461 E Look 206 Aluminium black	

	FRAMESET	DRIVETRAIN					
		MODEL CODE	C2C VIA NIRONE 7 Alu 105 10 sp mix Compact Y7B09	C2C VIA NIRONE 7 Alu 105 10 sp mix Triple Y7B45	C2C VIA NIRONE 7 Alu Xenon 10 sp mix Compact Y7B10	C2C VIA NIRONE 7 Alu Tiagra 9 sp mix Double Y7B47	C2C VIA NIRONE 7 Alu Tiagra 9 sp mix Triple Y7B48
	WHEELS	COMPONENTS					
		FRAME	TC07-VIA NIRONE 7 Alu - sloping geometry sizes 46-50-53-55-57-59-61 Bianchi FL5 Carbon/Al 11/8" CK-KT	TC07-VIA NIRONE 7 Alu - sloping geometry sizes 46-50-53-55-57-59-61 Bianchi FL5 Carbon/Al 11/8" CK-KT	TC07-VIA NIRONE 7 Alu - sloping geometry sizes 46-50-53-55-57-59-61 Bianchi FL5 Carbon/Al 11/8" CK-PB	TC07-VIA NIRONE 7 Alu - sloping geometry sizes 46-50-53-55-57-59-61 Bianchi FL5 Carbon/Al 11/8" CK-PB	TC07-VIA NIRONE 7 Alu - sloping geometry sizes 46-50-53-55-57-59-61 Bianchi FL5 Carbon/Al 11/8" CK-PB
	DRIVETRAIN	COMPONENTS					
		SHIFTERS	Shimano 105	Shimano 105	Campagnolo XENON™ QS™ / ESCAPE™ 10s Ergopower	Shimano TIAGRA	Shimano TIAGRA
	WHEELS	COMPONENTS					
		REAR DERAILLEUR	Shimano 105	Shimano 105	Campagnolo XENON™	Shimano TIAGRA	Shimano TIAGRA
	WHEELS	COMPONENTS					
		FRONT DERAILLEUR	Shimano 105	Shimano 105 triple	Campagnolo XENON™ QS™ for CT™	Shimano TIAGRA	Shimano TIAGRA triple
	WHEELS	COMPONENTS					
		CRANKSET	FSA OMEGA MegaExo Compact 50/34	FSA OMEGA MegaExo Triple 50/39/30	FSA OMEGA MegaExo Compact 50/34	FSA VERO Double 53/39	FSA VERO Triple 50/39/30
	WHEELS	COMPONENTS					
		CHAIN	KMC DX10SC	KMC DX10SC	KMC DX10SC	KMC X9	KMC X9
	WHEELS	COMPONENTS					
		SPROCKET	Shimano 105 12/25	Shimano 105 12/25	Fac Michelin PRIMATO 12/25	Shimano TIAGRA 12/25	Shimano TIAGRA 12/25
	WHEELS	COMPONENTS					
		WHEELS	Shimano WH-R500	Shimano WH-R500	-	-	-
	WHEELS	COMPONENTS					
		REAR HUB	-	-	Fac Michelin RACING 28h silver anodized	Joytech F192SB ALLOY 28H	Joytech F192SB ALLOY 28H
	WHEELS	COMPONENTS					
		FRONT HUB	-	-	Fac Michelin RACING 28h silver anodized	Joytech A141SB ALLOY 28H	Joytech A141SB ALLOY 28H
	WHEELS	COMPONENTS					
		RIMS	-	-	Ambrosio Aluminium 6060T silver anodized	Ambrosio Aluminium 6060T silver anodized	Ambrosio Aluminium 6060T silver anodized
	WHEELS	COMPONENTS					
		TIRE	Continental ULTRA SPORT 23x622 rigid	Continental ULTRA SPORT 23x622 rigid	Continental ULTRA SPORT 23x622 rigid	Continental ULTRA SPORT 23x622 rigid	Continental ULTRA SPORT 23x622 rigid
	WHEELS	COMPONENTS					
		HEADSET	FSA Z54-CUSTOM	FSA Z54-CUSTOM	FSA Z54-CUSTOM	FSA Z54-CUSTOM	FSA Z54-CUSTOM
	WHEELS	COMPONENTS					
		STEM	DA-32 3D forged alloy	DA-32 3D forged alloy	DA-32 3D forged alloy	DA-32 3D forged alloy	DA-32 3D forged alloy
	WHEELS	COMPONENTS					
		HANDLEBAR	ITM 300 SuperOver	ITM 300 SuperOver	ITM 300 SuperOver	ITM 300 SuperOver	ITM 300 SuperOver
	WHEELS	COMPONENTS					
		SEATPOST	SP-222 6061 alloy 31,6mm	SP-222 6061 alloy 31,6mm	SP-222 6061 alloy 31,6mm	SP-222 6061 alloy 31,6mm	SP-222 6061 alloy 31,6mm
	WHEELS	COMPONENTS					
		SADDLE	San Marco PONZA C) steel	San Marco PONZA C) steel	San Marco PONZA C) steel	San Marco PONZA C) steel	San Marco PONZA C) steel
	WHEELS	COMPONENTS					
		BRAKES	Bianchi RC-461 E	Bianchi RC-461 E	Bianchi RC-461 E	Bianchi RC-461 E	Bianchi RC-461 E
	WHEELS	COMPONENTS					
		PEDALS	Look 206	Look 206	Look 206	Look 206	Look 206
	WHEELS	COMPONENTS					
		WATERBOTTLE HANGER	Aluminium black	Aluminium black	Aluminium black	Aluminium black	Aluminium black
	FRAMESET	DRIVETRAIN					
		MODEL CODE	C2C VIA NIRONE 7 Alu Sora 8 sp mix Triple Y7B50	DAMA BIANCA LEI "FG Lite Women" Record 10 sp Double Y7B51	DAMA BIANCA ELLE Ultegra mx Triple LADY Y7B12	DAMA BIANCA SHE Mirage/Race 10 sp Triple LADY Y7B13	DAMA BIANCA SHE - sloping geometry sizes 44-47-50
	FRAMESET	DRIVETRAIN					
		FRAME	TC07-VIA NIRONE 7 Alu - sloping geometry sizes 46-50-53-55-57-59-61 Bianchi FL5 Carbon/Al 11/8" CK-PB-KT	DAMA BIANCA LEI - sloping geometry sizes 46-50-53-55-57-59 Bianchi FF16 SUPERLIGHT 11/8" CK-VT	DAMA BIANCA ELLE - sloping geometry sizes 46-49-51-53 Bianchi FLN Carbon/Al 11/8" CK	DAMA BIANCA SHE - sloping geometry sizes 44-47-50 Bianchi FL5 Carbon/Al 11/8" CK	DAMA BIANCA SHE - sloping geometry sizes 44-47-50 Bianchi FL5 Carbon/Al 11/8" CK
	FRAMESET	DRIVETRAIN					
		FORK COLOURS	CK-KT	CK-VT	CK	CK	CK
	FRAMESET	DRIVETRAIN					
		SHIFTERS	Shimano SORA	Campagnolo RECORD™ QS™ Ergopower™	Shimano ULTEGRA	Campagnolo MIRAGE™ QS™ / ESCAPE™ 10s Ergopower	Campagnolo MIRAGE™ QS™ / ESCAPE™ 10s Ergopower
	FRAMESET	DRIVETRAIN					
		REAR DERAILLEUR	Shimano SORA	Campagnolo RECORD™	Shimano ULTEGRA	Campagnolo RACE™	Campagnolo RACE™
	FRAMESET	DRIVETRAIN					
		FRONT DERAILLEUR	Shimano 2200	Campagnolo RECORD™ QS™	Shimano 105 triple	Campagnolo RACE™ Triple	Campagnolo RACE™ Triple
	FRAMESET	DRIVETRAIN					
		CRANKSET	FSA CRD-335 triple 52/42/30	Campagnolo RECORD™ ULTRA-TORQUE™ Carbon 53/39	FSA GOSSAMER MegaExo Triple 50/39/30	Campagnolo RACE™ Triple 52/42/30	Campagnolo RACE™ Triple 52/42/30
	FRAMESET	DRIVETRAIN					
		CHAIN	KMC HV800	Campagnolo RECORD™	KMC DX10SC	KMC DX10SC	KMC DX10SC
	FRAMESET	DRIVETRAIN					
		SPROCKET	Shimano HG50 13/26	Campagnolo RECORD™ UD™ 12/25	Shimano 105 12/25	Fac Michelin PRIMATO 12/25	Fac Michelin PRIMATO 12/25
	FRAMESET	DRIVETRAIN					
		WHEELS	-	Campagnolo EURUS silver version	Shimano WH-R500	-	-
	FRAMESET	DRIVETRAIN					
		REAR HUB	Joytech F192SB ALLOY 28H	-	-	Fac Michelin RACING 28h silver anodized	Fac Michelin RACING 28h silver anodized
	FRAMESET	DRIVETRAIN					
		FRONT HUB	Joytech A141SB ALLOY 28H	-	-	Fac Michelin RACING 28h silver anodized	Fac Michelin RACING 28h silver anodized
	FRAMESET	DRIVETRAIN					
		RIMS	Ambrosio Aluminium 6060T silver anodized	-	-	Ambrosio Aluminium 6060T silver anodized	Ambrosio Aluminium 6060T silver anodized
	FRAMESET	DRIVETRAIN					
		TIRE	Continental ULTRA SPORT 23x622 rigid	Continental GRAND PRIX 4000 700x23	Continental ULTRA SPORT 23x622 rigid	Continental ULTRA SPORT 23x622 rigid	Continental ULTRA SPORT 23x622 rigid
	FRAMESET	DRIVETRAIN					
		HEADSET	FSA Z54-CUSTOM	FSA ORBIT CF	FSA Z54-CUSTOM	FSA Z54-CUSTOM	FSA Z54-CUSTOM
	FRAMESET	DRIVETRAIN					
		STEM	DA-32 3D forged alloy	ITM 101 - Full Carbon	DA-32 3D forged alloy	DA-32 3D forged alloy	DA-32 3D forged alloy
	FRAMESET	DRIVETRAIN					
		HANDLEBAR	ITM 300 SuperOver	ITM 101 - Full Carbon Round Anatomic Shape	ITM ELLE Alu	ITM ELLE Alu	ITM ELLE Alu
	FRAMESET	DRIVETRAIN					
		SEATPOST	SP-222 6061 alloy 31,6mm	ITM 101 - Full carbon 32,4mm	SP-222 6061 alloy 31,6mm	SP-222 6061 alloy 31,6mm	SP-222 6061 alloy 31,6mm
	FRAMESET	DRIVETRAIN					
		SADDLE	San Marco PONZA C) steel	San Marco ASPIDE GLAMOUR TX	San Marco ASPIDE GLAMOUR	Selle Royal Dardo Lady	Selle Royal Dardo Lady
	FRAMESET	DRIVETRAIN					
		BRAKES	Bianchi RC-461 E	Campagnolo RECORD™-D SKELETON™	Bianchi RC-461 E	Bianchi RC-461 E	Bianchi RC-461 E
	FRAMESET	DRIVETRAIN					
		PEDALS	Look FQV	NO	NO	NO	NO
	FRAMESET	DRIVETRAIN					
		WATERBOTTLE HANGER	Aluminium black	Bianchi Carbon DR.DOBERMANN	Aluminium black	Aluminium black	Aluminium black

MODEL CODE	SPECIAL D2 Crono Carbon Record 10 sp Y7B52	SPECIAL D2 Crono Alu Ultegra 10 sp Y7B53	SPECIAL D2 Pista Alu Record Y7B54	SPECIAL Pista Steel Y7B55	SPECIAL JUNIOR 24" Sora 16 sp Y7B57
FRAME	D2 CRONO Carbon monocoque, 11/8" 3 sizes: S [49-53] - M [54-58] - L [59-63]	D2 Crono Alu sizes 49>63 x 1cm	D2 PISTA, Alu sizes 49>63 x 1cm	Pista CrMo (Steel) Butted	Aluminium PG 24" size 41
FORK	OVAL AERO JetStream carbon/alu 11/8"	OVAL AERO JetStream carbon/alu 11/8"	OVAL Aero JetStream carbon/alu 11/8"	CrMo (Steel) Butted 1" KC	Steel 1" CK
COLOURS	EK	CK	CK		
SHIFTERS	Campagnolo Shifter bar end 10sp with trasmissions	Shimano ULTEGRA	NO	NO	Shimano SORA
REAR DERAILLEUR	Campagnolo RECORD™ 10s	Shimano ULTEGRA	NO	NO	Shimano SORA
FRONT DERAILLEUR	Campagnolo RECORD™ QS™	Shimano ULTEGRA	NO	NO	Shimano FD-2200
CRANKSET	PMP MICROROAD II ALX 54/39t	Shimano ULTEGRA 53/39t	Campagnolo RECORD™-D PISTA 165MM - 51T	Truativ TUORO 165/170mm. - 48T	Fac Michelin YOUNG 45/35 L145
CHAIN	Campagnolo RECORD™	KMC DX10SC 10sp	Fac Michelin PISTA	KMC Z610H	KMC HV800
SPROCKET	Sproket for wheels Ghibli 11-21 9sp	Shimano ULTEGRA 11/23	Fac Michelin 15T	Steel 16T	Fac Michelin PRIMATO 16/24
WHEELS	Campagnolo BORA tubular + Campagnolo GHIBLI	Mavic COSMIC ELITE	Mavic ELLIPSE	ALX Solo Track 32h.	-
REAR HUB	-	-	-	-	Joytech F192SB ALLOY 28h.
FRONT HUB	-	-	-	-	Joytech A141SB ALLOY 28h.
RIMS	-	-	-	-	Alex DR13 clincher 28H, 24"X1.0"
TIRE	Continental COMPETITION Tubular	Continental GRAND PRIX 4-Season 700x23	Continental GRAND PRIX 4-Season 700x23	Continental ULTRASPORT, wire bead	KENDA Concept 24" 25-520
HEADSET	FSA ORBIT Z5	FSA ORBIT X	FSA ORBIT Z5	VP-A34C	Fac Michelin TEAM Threadless 1"
STEM	ITM 101 - Full Carbon	ITM VISIA 3D Forged Lite Alu /Carbon	ITM 4-EVER Super Over, Ergal 7075/carbon 3K	Kalloy AS-006, 3-D forged 6061, -17 degree, Hi-Polish	HL-TDS-120-8
HANDLEBAR	ITM NIVOLA Aero bar Full Carbon	ITM CDB WING	ITM 4-EVER Super Over, Ergal 7075 / carbon 3K	Prememtec 4002R, Steel - Chrome	ITM Road Racing
BAR END	included	ITM ULTRA VIP Carbon	NO	NO	NO
BRAKE LEVER	ITM NIVOLA Alu forged	Integrated	NO	NO	Integrated
SEATPOST	ITM 101 Full carbon 27,2mm	ITM 101 Full carbon 27,2mm	ITM 4-EVER Carbon 31,6mm	Kalloy SP-600, alloy - silver, 27,2 mm	SP Z32 alloy 27,2mm
SADDLE	Selle Italia SLR KIT Carbon	San Marco ASPIDE	San Marco ASPIDE	Velo VL-1166	Selle Italia JUNIOR
BRAKES	Campagnolo RECORD™-D SKELETON™	Shimano ULTEGRA	NO	NO	Bianchi RC-452
PEDALS	NO	NO	NO	Wellgo LU-895, toe clip compatible	NO
WATERBOTTLE HANGER	Bianchi Carbon DR.DOBERMANN	Elite CIUSSI GEL black	NO	NO	Aluminium black

MODEL CODE	OETZI Titanium SRAM X.O Disc Y7B60	OETZI 9800 Aluminium TB SRAM X.O Disc Y7B61	OETZI 9200 Aluminium TB XT/LX Disc Y7B62	OETZI 9500 Carbon XTR/XT Disc Y7B63	OETZI 9300 Carbon XT/LX Disc Y7B64	MUTT 7800 Al DB XTR mix Disc Y7B65
FRAME	Oetzi Titanium sizes 38-43-48-53	Oetzi Aluminium sizes 38-43-48-53	Oetzi Aluminium sizes 38-43-48-53	Oetzi Carbon Monocoque sizes 43-48-53	Oetzi Carbon Monocoque sizes 43-48-53	MUTT Aluminium sizes 43-48-53
FORK	Rockshox SID Team POP LOC Remote Control travel: 80mm	Rockshox SID Team POP LOC Remote Control travel: 80mm	Rockshox Recon 351 Solo Air Lockout travel: 100mm	FOX F 100 RL push bottom lockout travel: 100mm	Rockshox Recon 351 Solo Air Lockout travel: 100mm	Rockshox Recon 351 Solo Air Lockout travel: 100mm
COLOURS	TM	KN	KN	EN	EN	KW
SHIFTERS	Sram X.O Trigger	Sram X.O Trigger	Shimano LX	Shimano XT	Shimano LX	Shimano XT
REAR DERAILLEUR	Sram X.O	Sram X.O	Shimano XT	Shimano XTR	Shimano XT	Shimano XTR
FRONT DERAILLEUR	Sram X-9	Sram X-9	Shimano LX	Shimano XT	Shimano LX	Shimano XT
CRANKSET	FSA Team Issue MegaExo 44/32/22	FSA Team Issue MegaExo 44/32/22	Shimano LX 44/32/22	Shimano XT 44/32/22	Shimano LX 44/32/22	FSA AFTERBURNER MegaExo 44/32/22
CHAIN	Sram PC-990	Sram PC-990	Shimano LX	Shimano XTR	Shimano LX	Shimano LX
SPROCKET	Sram PG-990 11/32	Sram PG-990 11/32	Shimano LX 11/32	Shimano XT 11/32	Shimano LX 11/32	Shimano XT 11/32
WHEELS	Mavic CROSSMAX SL DISC	Mavic CROSSMAX SL DISC	Mavic CROSSRIDE DISC	Mavic CROSSTRAIL DISC	Mavic CROSSRIDE DISC	Mavic CROSSRIDE DISC
REAR HUB	-	-	-	-	-	-
FRONT HUB	-	-	-	-	-	-
RIMS	-	-	-	-	-	-
TIRE	Michelin XCR Dry 2 Tubeless 26X2.00	Michelin XCR Dry 2 Tubeless 26X2.00	Michelin XCR A/T NON Tubeless 26"x2.00	Michelin XCR Dry 2 Tubeless 26X2.00	Continental SPEEDKING 26 x 2,3	Continental SPEEDKING 26 x 2,3
HEADSET	FSA NO.12AY-6 internal style headset	FSA ORBIT Z5	FSA ORBIT Z5	FSA ORBIT Z5	FSA ORBIT Z5	FSA Z54-CUSTOM
STEM	FSA OS 115C Carbon Cap	FSA OS 115C Carbon Cap	FSA OS150LX Super Over	FSA OS150LX Super Over	FSA OS150LX Super Over	FSA OS-190LX ±6°
HANDLEBAR	FSA K-Force Flat OS Carbon/Kevlar	FSA K-FORCE Flat OS Carbon/Kevlar	FSA XC-180 OS	FSA XC-180 OS	FSA XC-180 OS	FSA XC-282A Riser
SEATPOST	PMP Carbon 31,6mm	PMP Carbon 31,6mm	FSA SL-280 31,6mm	PMP CARBON 31,6mm	FSA SL-280 31,6mm	FSA SL-280 31,6mm
SADDLE	Selle Italia SLR XC	Selle Italia SLR XC	WTB Rocket V SLT	Selle Italia SLR XC	WTB ROCKET V SLT	WTB ROCKET V SLT
GRIPS	WTB Moto Tec	WTB Moto Tec	WTB Moto Tec	WTB Moto Tec	WTB MOTO TEC	WTB WEIRWOLF
BRAKES	Avid JUICY CARBON DISC	Avid JUICY CARBON DISC	Shimano LX DISC	Shimano XT DISC	Shimano LX DISC	Shimano LX DISC
BRAKE LEVER	included	included	included	included	included	included
PEDALS	NO	NO	NO	NO	NO	Shimano PDM505
WATERBOTTLE HANGER	Elite CIUSSI GEL black	Elite CIUSSI GEL black	Elite CIUSSI GEL black	Elite CIUSSI GEL black	Elite CIUSSI GEL black	Aluminium black

FRAMESET	MODEL CODE	MUTT 7700 Al DB XT/LX Disc Y7B66	MUTT 7400 Al DB LX/Deore Disc Y7B67	DOSS 6600 Al DEORE Disc Mechanical Y7B68	DOSS 6400 Al DEORE V-Brake Y7B69	DOSS 6100 Al Alivio mix Disc Mechanical Y7B70	DOSS 4800 Al Alivio mix V-Brake Y7B71
	FRAME	MUTT Aluminium sizes 43-48-53	MUTT Aluminium sizes 43-48-53	DOSS Aluminium sizes 38-43-48-53	DOSS Aluminium sizes 38-43-48-53	DOSS Aluminium sizes 38-43-48-53	DOSS Aluminium sizes 38-43-48-53
DRIVETRAIN	FORK	Rockshox Tora 302 Turnkey Pop Loc travel: 100mm	Rockshox Dart 3 Lockout Travel: 100mm	Rockshox Dart 2 TurnKey Lockout Travel: 100mm	Rockshox Dart 2 TurnKey Lockout Travel: 100mm	SunTour XCT-LO Lockout travel: 75mm	SunTour SF-XCT travel: 75mm
	COLOURS	PR-GH	GH	OK-KW	MT-RL	MT-PB	KW-RL-OK
WHEELS	SHIFTERS	Shimano LX	Shimano DEORE	Shimano DEORE	Shimano DEORE	Shimano ALIVIO	Shimano ST-EF50
	REAR DERAILLEUR	Shimano XT	Shimano LX	Shimano DEORE	Shimano DEORE	Shimano ALIVIO	Shimano ALIVIO
COMPONENTS	FRONT DERAILLEUR	Shimano LX	Shimano DEORE	Shimano DEORE	Shimano DEORE	Shimano DEORE	Shimano C-050
	CRANKSET	FSA MOTO MEGAEXO 44/32/22	FSA ALPHA DRIVE 44/32/22	FSA ALPHA DRIVE 44/32/22	FSA Alpha Drive 44/32/22	FSA DYNADRIVE 42/32/22	FSA RPM ALB32B 42/32/22
WHEELS	CHAIN	KMC X9	KMC X9	KMC X9	KMC X9	KMC HV800	KMC HV800
	SPROCKET	Shimano DEORE 11/32	Shimano DEORE 11/32	Shimano DEORE 11/32	Shimano DEORE 11/32	Shimano CS-HG30 11/32	Shimano CS-HG30 11/32
COMPONENTS	WHEELS	-	-	-	-	-	-
	REAR HUB	Shimano DEORE DISC 32h	Shimano FH-M495L DISC 32h	Shimano FH-M495L DISC 32h	Shimano FH-RM60 32h	Shimano FH-RM65 DISC 32h	Shimano FH-RM30 32h
COMPONENTS	FRONT HUB	Shimano DEORE DISC 32h	Shimano FH-M495L DISC 32h	Shimano FH-M495L DISC 32h	Shimano HB-RM60 32h	Shimano HB-RM65 DISC 32h	Joytech JY-731 32h
	RIMS	Mavic XM 317	Mavic XM 317	Mach 1 MX Disc	Mach 1 210 XC-type	Mach 1, 2.30 Disc	Mach 1, 210 XC-type
COMPONENTS	TIRE	Continental SPEEDKING 26 x 2.3	Continental SPEEDKING 26 x 2.3	WTB WEIRWOLF 2.1 COMP	WTB WEIRWOLF 2.1 COMP	WTB VELOCIRAPTOR 2.1	WTB VELOCIRAPTOR 2.1
	HEADSET	FSA Z54-CUSTOM	FSA Z54-CUSTOM	FSA Z54-CUSTOM	FSA Z54-CUSTOM	FSA Z54-CUSTOM	FSA NO.10
COMPONENTS	STEM	FSA OS-190LX	FSA OS-190LX	DA-35 3D forged alloy	DA-35 3D forged alloy	HL TDS-C41-8	HL TDS-C41-8
	HANDLEBAR	FSA XC-282A Riser	FSA XC-282A Riser	MTB F3-AL Low Rise	MTB F3-AL Low Rise	MTB F3-AL Low Rise	MTB F3-AL Low Rise
COMPONENTS	SEATPOST	FSA SL-280 31,6mm	SP-222 6061 alloy 31,6mm	SP-222 6061 alloy 31,6mm	SP-222 6061 alloy 31,6mm	SP-222 6061 alloy 31,6mm	SP-222 6061 alloy 31,6mm
	SADDLE	WTB ROCKET V SLT	WTB ROCKET V COMP	WTB ROCKET V COMP	WTB ROCKET V COMP	WTB SPEED V SPORT	WTB SPEED V SPORT
COMPONENTS	GRIPS	WTB WEIRWOLF	WTB WEIRWOLF	WTB WEIRWOLF	WTB WEIRWOLF	Velo VLG-311	Velo VLG-311
	BRAKES	Shimano LX DISC	Shimano DEORE DISC	Shimano BR-M545 Mechanical disc	Lee-Chi TX-121 v-brake	Shimano BR-M415 Mechanical Disc	Lee-Chi TX-121 v-brake
COMPONENTS	BRAKE LEVER	included	included	Shimano BL-M420	Shimano BL-M420	included	included
	PEDALS	Shimano PDM505	Shimano PDM505	VP-515A	VP-515A	VP-990A	VP-990A
COMPONENTS	WATERBOTTLE HANGER	Aluminium black	Aluminium black	Aluminium black	Aluminium black	NO	NO

FRAMESET	MODEL CODE	DOSS 4600 Al Acera mix V-Brake Y7B72	DIRT BIG R00 Deore Disc Y7B80	DIRT RED R00 Alivio Disc mechanical Y7B81
	FRAME	DOSS Aluminium sizes 38-43-48-53	DIRT Aluminium DB sizes 40-35	Dirt Aluminium PG sizes 40-35
DRIVETRAIN	FORK	SunTour SF-XCT travel: 75mm	Marzocchi Dirt Jam Pro travel: 100mm	Sun Tour SF7-XCM travel: 100mm
	COLOURS	KW-RL-OK	UR	FR
WHEELS	SHIFTERS	Shimano ST-EF50	Shimano DEORE	Shimano ALIVIO
	REAR DERAILLEUR	Shimano ACERA	Shimano DEORE	Shimano ALIVIO
COMPONENTS	FRONT DERAILLEUR	Shimano C-050	Shimano DEORE	Shimano ALIVIO
	CRANKSET	Detai DT1-TS342-G4P5 42/34/24	Truativ HUSSEFELT - HUSSE ROCKG 32/22	Truativ RUKTION 3.0 42/32/22
WHEELS	CHAIN	KMC HV800	KMC X9	KMC HV800
	SPROCKET	Shimano CS-HG30 11/32	Shimano DEORE 11/32	Shimano CS-HG30 11/32
COMPONENTS	WHEELS	-	-	-
	REAR HUB	Shimano FH-RM30 32h	Shimano FH-M495L DISC 32h	Shimano FH-RM65 DISC 32h
COMPONENTS	FRONT HUB	Joytech JY-731 32h	Shimano FH-M495L DISC 32h	Shimano HB-RM65 DISC 32h
	RIMS	Spectra black	Mach 1 MX Disc	Mach 1, 2.30 Disc
COMPONENTS	TIRE	Vee-Rubber VRB-103 26x2.10	Continental GRAVITY Pro 26x2.3	WTB TIMBERWOLF 2.3
	HEADSET	FSA NO.10	FSA Z54-CUSTOM	FSA ORBIT x 1"1/8 alloy cup
COMPONENTS	STEM	HL TDS-C41-8	Truativ HUSSEFELT HS-06-H1	HL TDS-D365-8
	HANDLEBAR	MTB F3-AL Low Rise	Truativ HUSSEFELT HB-06-RB--H1	Mtb-AL-198FOV
COMPONENTS	SEATPOST	SP-222 6061 alloy 31,6mm	Selcof alloy 31N - 31,4mm	SP-222 6061 alloy 31,6mm
	SADDLE	Cionlli VAPOR 6788	FiZi:k PLATEAU	WTB SPEED V SPORT
COMPONENTS	GRIPS	Velo VLG-311	WTB MOTO TEC	Velo VLG-311
	BRAKES	Lee-Chi TX-121 v-brake	Shimano DEORE DISC	Shimano BR-M415 Mechanical Disc
COMPONENTS	BRAKE LEVER	included	included	included
	PEDALS	VP-990A	Truativ HUSSEFELT PD-03-HX-40	VP-558
COMPONENTS	WATERBOTTLE HANGER	NO	NO	NO

FRAMESET	MODEL CODE	CAAL 8800 XC Full Suspended Alu TB XTR/XTDisc Y7B73	CAAL 8600 XC Full Suspended Alu TB Sram X-9/X-7 Disc Y7B74
	FRAME	CAAL Aluminium Triple Butted sizes: 42-47-52	CAAL Aluminium Triple Butted sizes: 42-47-52
DRIVETRAIN	REAR SHOCK	FOX Float R	FOX Float R
	FORK	FOX F 100 RL push bottom lockout travel: 100mm	Rockshox Recon 351 Solo Air Lockout travel: 100mm
WHEELS	COLOURS	KN	KN
	SHIFTERS	Shimano XT	SRAM X-7 trigger
COMPONENTS	REAR DERAILLEUR	Shimano XTR	SRAM X-9
	FRONT DERAILLEUR	Shimano XT	SRAM X-7
WHEELS	CRANKSET	FSA AFTERBURNER MegaExo 44/32/22	FSA AFTERBURNER MegaExo 44/32/22
	CHAIN	Shimano LX	SRAM PC971
COMPONENTS	SPROCKET	Shimano XT 11/32	SRAM PG-970 11/32
	WHEELS	Mavic CROSSTRAIL DISC	Mavic CROSSRIDE DISC
COMPONENTS	REAR HUB	-	-
	FRONT HUB	-	-
COMPONENTS	RIMS	-	-
	TIRE	Michelin XCR A/T NON Tubeless 26"x2.00	Continental SPEEDKING 26 x 2.3
COMPONENTS	HEADSET	FSA ORBIT Z5	FSA ORBIT Z5
	STEM	FSA OS150LX Super Over 100-120mm	FSA OS150LX Super Over 100-120mm
COMPONENTS	HANDLEBAR	FSA XC-282A Riser	FSA XC-282A Riser
	SEATPOST	FSA SL-280 31,4mm	FSA SL-280 31,4mm
COMPONENTS	SADDLE	WTB ROCKET V SLT Silver Titanium	WTB ROCKET V SLT
	GRIPS	WTB MOTO TEC	WTB MOTO TEC
COMPONENTS	BRAKES	Shimano LX DISC	Avid JUICY SEVEN DISC
	BRAKE LEVER	included	included
COMPONENTS	PEDALS	NO	NO
	WATERBOTTLE HANGER	Elite CIUSSI GEL black	Elite CIUSSI GEL black

MODEL CODE	CAAL 8400 XC Full Suspended Alu TB XT/LX Disc Y7B75	CAAL 8200 XC Full Suspended Alu TB DEORE Disc Mechanical Y7B76	LEGOR 5600 All mountain 130 XTR/XT Disc Y7B77	LEGOR 5400 All mountain 130 XT/LX Disc Y7B78	LEGOR 5200 All mountain 130 Deore Disc mechanical Y7B79	KAVRA 5800 Enduro XT/LX Disc Y6B67
FRAME	CAAL Aluminium Triple Butted sizes: 42-47-52	CAAL Aluminium Triple Butted sizes: 42-47-52	Legor all mountain Alu, 130mm travel sizes: 43-47-52	Legor all mountain Alu ,130mm travel sizes: 43-47-52	Legor all mountain Alu ,130mm travel sizes: 43-47-52	KAVRA ENDURO Alu DB ,150mm travel sizes: 43-47-52
REAR SHOCK FORK	FOX Float R Rockshox Recon 351 Solo Air Lockout travel: 100mm	Rock Shox BAR adjust Rockshox Dart 2 TurnKey Lockout-travel: 100mm	FOX Float R FOX 32 Talas RL push bottom lockout travel setting: 140+120+100mm	Rock shox BAR adjust Rock shox Revelation 426 Dual Air Lockout travel: 130mm	Rock shox BAR adjust Rock shox Tora 318 U-Turn travel: 85-130mm	Manitou SWINGER AIR 3 Manitou NIXON SUPER travel: 145mm travel
COLOURS	TG	WS	MT	MT	PR	MG
SHIFTERS	Shimano LX	Shimano DEORE	Shimano XT	Shimano LX	Shimano DEORE	Shimano XT
REAR DERAILLEUR	Shimano XT	Shimano DEORE	Shimano XTR	Shimano XT	Shimano DEORE	Shimano XT
FRONT DERAILLEUR	Shimano LX	Shimano DEORE	Shimano XT	Shimano LX	Shimano DEORE	Shimano LX
CRANKSET	FSA Moto MegaExo 44/32/22	FSA Alpha Drive 44/32/22	Shimano XT 44/32/22	FSA MOTO MegaExo 44/32/22	FSA ALPHA DRIVE 44/32/22	Shimano XT 44/32/22
CHAIN	KMC X9	KMC X9	Shimano LX	KMC X9	KMC X9	Shimano LX
SPROCKET	Shimano DEORE 11/32	Shimano DEORE 11/32	Shimano LX 11/32	Shimano DEORE 11/32	Shimano DEORE 11/32	Shimano LX 11/32
WHEELS	-	-	-	-	-	-
REAR HUB	Shimano LX DISC 32h	Shimano FH-M495-L DISC 32h	Shimano XT DISC 32h	Shimano DEORE DISC 32h	Shimano FH-M495-L DISC 32h	Shimano LX DISC 32h
FRONT HUB	Shimano LX DISC 32h	Shimano HB-M495-L DISC 32h	Shimano XT DISC 32h	Shimano DEORE DISC 32h	Shimano HB-M495-L DISC 32h	Shimano LX DISC 32h
RIMS	Mavic XM 317	Mach 1 MX Disc	Mavic XM 317	Shimano DEORE DISC 32h	Mach 1 MX Disc	MAVIC EX 729 DISC
TIRE	Continental SPEEDKING 26 x 2.3	WTB WeirWolf 2.1 Comp	Michelin MOUNTAIN EXTREME 26"x2.20 NON Tubeless	Continental SPEEDKING 26 x 2.3	WTB WEIRWOLF 2.1 Comp	Michelin MOUNTAIN EXTREME 26"x2.20 NON Tubeless
HEADSET	FSA Z54-CUSTOM	FSA Z54-CUSTOM	FSA ORBIT Z5	FSA Z54-CUSTOM	FSA Z54-CUSTOM	FSA ORBIT Z5
STEM	FSA 05150LX Super Over 100-120mm	DA-35.3D forged alloy raise 6°	FSA 05150LX Super Over 100-120mm	FSA 05150LX Super Over 100-120mm	DA-35.3D forged alloy raise 6°	FSA FR-200 OS
HANDLEBAR	FSA XC-282A Riser	MTB F3-AL Low Rise	FSA XC-282A Riser	FSA XC-282A Riser	MTB F3-AL Low Rise	FSA HB-FR-270BOS
SEATPOST	FSA SL-280 31,6mm	SP-151 831,4mm, L350, sandblast black	FSA SL-280 31,6mm	FSA SL-280 31,6mm	SP-222 6061 alloy 31,6mm	FSA SP-FR-270 31,4mm
SADDLE	WTB ROCKET V SLT	WTB ROCKET V Comp	WTB ROCKET V SLT Titanium	WTB ROCKET V SLT	WTB ROCKET V Comp	Fi'zi:k PLATEAU
GRIPS	WTB WEIRWOLF	WTB WEIRWOLF	WTB MOTO TEC	WTB WEIRWOLF	WTB WEIRWOLF	Bike Ribbon MTB Extreme
BRAKES	Shimano LX DISC	Shimano BR-M545 Mechanical disc	Shimano XT DISC	Shimano DEORE DISC	Shimano BR-M545 Mechanical disc	Shimano XT DISC
BRAKE LEVER	included	Shimano BL-M420	included	included	Shimano BL-M420	included
PEDALS	Shimano PDM505	VP-515A	NO	NO	VP-515A	Shimano PDM-424
WATERBOTTLE HANGER	Aluminium black	Aluminium black	NO	NO	NO	NO

MODEL CODE	KAVRA 5400 Enduro LX/Deore Disc Y6B68	KAVRA 5200 Enduro Deore Disc Y6B69
FRAME	KAVRA ENDURO Alu DB ,130mm travel sizes: 43-47-52	KAVRA ENDURO Alu DB ,130mm travel sizes: 43-47-52
REAR SHOCK FORK	Rock Shox BAR adjust Manitou STANCE BLUNT travel: 130mm travel	Rock Shox BAR adjust SunTour SF-DURO D travel: 130mm travel
COLOURS	MG	KW
SHIFTERS	Shimano DEORE	Shimano DEORE
REAR DERAILLEUR	Shimano LX	Shimano DEORE
FRONT DERAILLEUR	Shimano LX	Shimano LX
CRANKSET	Shimano LX 44/32/22	FSA Alpha Drive 44/32/22
CHAIN	KMC9000	KMC9000
SPROCKET	Shimano DEORE 11/32	Shimano DEORE 11/32
WHEELS	-	-
REAR HUB	Shimano DEORE DISC 32h	Shimano FH-M495-L DISC 32h
FRONT HUB	Shimano DEORE DISC 32h	Shimano HB-M495-L DISC 32h
RIMS	Mavic EX 325 DISC	Ambrosio/Bianchi 360*
TIRE	Continental GRAVITY 26x2.3	Continental EXPLORER 26x2.1
HEADSET	FSA Z54-CUSTOM	FSA Z54-CUSTOM
STEM	FSA ST-FR-2300S	Bianchi forged alloy
HANDLEBAR	FSA HB-FR-330	Bianchi alloy Low Rise
SEATPOST	FSA SP-FR-270 31.4mm	Bianchi SP-151 31,4mm
SADDLE	Fi'zi:k PLATEAU	Fi'zi:k PLATEAU Eco
GRIPS	949 black	949 black
BRAKES	Shimano DEORE DISC	Shimano DEORE DISC
BRAKE LEVER	included	included
PEDALS	Shimano PDM-424	Shimano PDM-424
WATERBOTTLE HANGER	NO	NO

MODEL CODE	CAMALEONTE IV 105 10 sp mix Triple Y7B91	CAMALEONTE III Tiagra 9 sp mix Triple Y7B92	CAMALEONTE II Sora 8 sp mix Triple Y7B93
FRAME	Sport Alu road sizes 43-48-53-58	Sport Alu road brake sizes 43-48-53-58	Sport Alu v-brake sizes 43-48-53-58
FORK	Bianchi FL5 Carbon/Al L300	Bianchi FL5 Carbon/Al L300	ACL-A614N45 Alloy
COLOURS	GH-KW-CK	GH-KW-CK	GH-KW-CK
SHIFTERS	Shimano SL-R770	Shimano SL-R440	Shimano ST-R225 -ST-R221
REAR DERAILLEUR	Shimano 105	Shimano Tiagra	Shimano SORA
FRONT DERAILLEUR	Shimano FD-R773 triple	Shimano Tiagra triple	Shimano SORA
CRANKSET	FSA OMEGA MegaExo Triple 50/39/30t	FSA Vero Triple 50/39/30t	Shimano SORA 52/42/30t
CHAIN	KMC DX10SC 10sp	KMC X9	Fac Michelin PRIMATO MICHE
SPROCKET	Shimano 105 12/25	Shimano Tiagra 12/25	Shimano SORA 12/25
WHEELS	Shimano WH-R500	-	-
REAR HUB	-	Joytech F192SB ALLOY 28H polish anodized	Joytech F192SB ALLOY 28H polish anodized
FRONT HUB	-	Joytech A141SB ALLOY 28H polish anodized	Joytech A141SB ALLOY 28H polish anodized
RIMS	-	Ambrosio Aluminium 6060T silver anodized	Ambrosio Aluminium 6060T silver anodized
TIRE	Continental ULTRA SPORT 25x622 rigid	Continental ULTRA SPORT 25x622 rigid	Continental ULTRA SPORT 25x622 rigid
HEADSET	FSA Z54-CUSTOM	FSA Z54-CUSTOM	FSA Z54-CUSTOM
STEM	Alloy MA-527 angle Adjustment	Alloy MA-527 angle Adjustment	Alloy MA-527 angle Adjustment
HANDLEBAR	Bianchi AL-110 PP 580mm	Bianchi AL-110 PP 580mm	Bianchi AL-110 PP 580mm
SEATPOST	SP-222 6061 alloy 31,6mm	SP-222 6061 alloy 31,6mm	SP-222 6061 alloy 31,6mm
SADDLE	Selle Royal VIPER - Look in gel	Selle Royal VIPER	Selle Royal VIPER
BAR END	HL MT 90 A BLACK	HL MT 90 A BLACK	HL MT 90 A BLACK
BRAKES	Bianchi RC-461 E	Bianchi RC-461 E	Alloy v-brake MV-85
BRAKE LEVER	Shimano BL-R770	Shimano BL-R550	Integrated
PEDALS	VP-516A Aluminium	VP-516A Aluminium	VP-516A Aluminium
WATERBOTTLE HANGER	Aluminium black	Aluminium black	Aluminium black

T-ROAD

FRAMESET

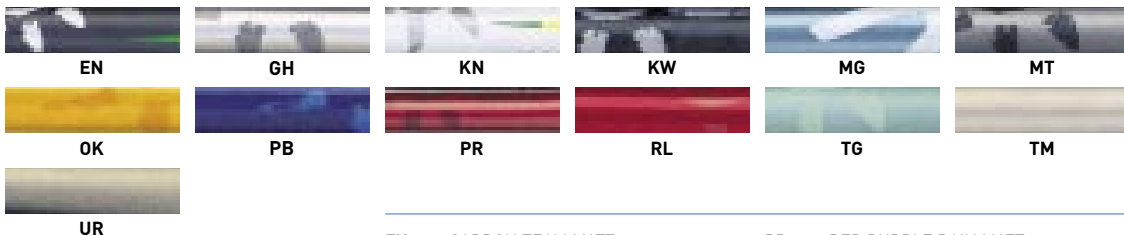
DRIVETRAIN

WHEELS

COMPONENTS

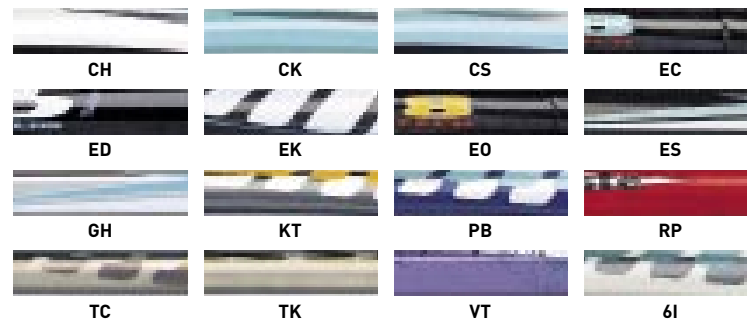
MODEL CODE	VIA DELLE BATTAGLIE Sora 16 sp Y7B95	VIALE ABRUZZI Gent Shimano 2200 16 sp Y7B96	VIALE ABRUZZI Lady Shimano 2200 16 sp Y7B97
FRAME	Sport Alu road sizes 43-48-53-58 Bianchi FS07 Carbon /Alu Sport 11/8" CT	Sport Alu Gent sizes 47-51-55 CrMo 11/8" CK-ED	Sport Alu Lady sizes 43-47 CrMo 11/8" CK-ED
FORK COLOURS			
SHIFTERS	Shimano ST-R221	Shimano ST-R221	Shimano ST-R221
REAR DERAILLEUR	Shimano SORA	Shimano 2200	Shimano 2200
FRONT DERAILLEUR	Shimano FD-R440A	Shimano FD-R440A	Shimano FD-R440A
CRANKSET	Shimano SORA 52/39t	Shimano 2200 50/39t	Shimano 2200 50/39t
CHAIN	KMC HV800	KMC HV800	KMC HV800
SPROCKET	Shimano SORA 13/26	Fac Michelin 13/26	Fac Michelin 13/26
REAR HUB	Shimano SORA 32h	Joytech F192DSE 28h ALLOY	Joytech F192DSE 28h ALLOY
FRONT HUB	Shimano HB-NX32 32h	Joytech A171DSE 28H ALLOY	Joytech A171DSE 28H ALLOY
RIMS	Bianchi componenti 32h	Mach 1 RJ project	Mach 1 RJ project
TIRE	Michelin DYNAMIC 25-622	Michelin DYNAMIC 25-622	Michelin DYNAMIC 25-622
HEADSET	FSA Z54-CUSTOM	FSA B-525	FSA B-525
STEM	MA-527 alloy Adjustment Ahead	MQ-549-5 alloy, angle Adjustment Quill	MA-549-5 alloy, angle Adjustment Quill
HANDLEBAR	ITM CONDOR	ITM Alloy T-Road	ITM Alloy T-Road
SEATPOST	SP-222 6061 alloy 31,6mm	SP-232 alloy 27,2mm	SP-232 alloy 27,2mm
SADDLE	Selle Royal VIPER LOOKIN gel	Selle Royal VIPER	Selle Royal VIPER
GRIPS	Herrmans ZEGLO DD04	Herrmans ZEGLO DD04	Herrmans ZEGLO DD04
BRAKES	Bianchi RC-469	Bianchi RC-469	Bianchi RC-469
BRAKE LEVER	Included	Included	Included
PEDALS	VP-516A	VP 610	VP 610
CHAINGUARD	NO	Peruzzo 505 EUROPA 22N	Peruzzo 505 EUROPA 22N
MUDGUARDS	Canyon PRGB700PL	Canyon PRGB700PL	Canyon PRGB700PL
KICKSTAND	NO	Aluminium	Aluminium
CARRIER REAR	Aluminium tubular	Aluminium tubular	Aluminium tubular
FRONT LIGHT	Basta CLEAR on/on halogen	Basta ISI S std bulb	Basta ISI S std bulb
REAR LIGHT	on mudguard	on mudguard	on mudguard
PUMP	SKS ROOKIE 250mm	SKS ROOKIE 250mm	SKS ROOKIE 250mm
DYNAMO	included front hub	Basta SOLO	Basta SOLO

MTB



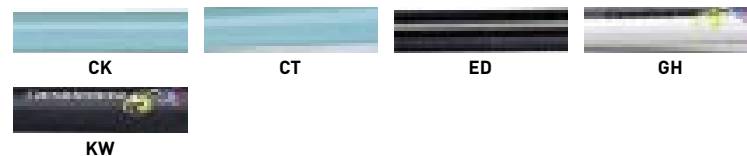
EN	CARBON TEAM MATT	PR	RED PURPLE RAIN MATT
GH	METAL GREYHOUND	RL	RED MELINA
KN	TEAM 2007	TG	TAIGA GREEN MATT
KW	BLACK MAMBA MATT	TM	NATURAL TITANIUM MTB
MG	GREY BLUEMOON	UR	ULURU ROCK MATT
MT	GREY MONSOON RAT MATT		
OK	ORANGE KILL BILL		
PB	BLU PULP		

ROAD



CH	CARBON WHITE MANTA	GH	METAL GREYHOUND
CK	CELESTE BIANCHI	KT	TAHITI GREY
CS	CARBON CELESTE SHARK	PB	BLU PULP
EC	NATURAL CARBON/CELESTE BIANCHI/WHITE	RP	RED PULP
ED	METAL BLACK	TC	NATURAL TITANIUM C2C
EK	NATURAL CARBON/WHITE	TK	NATURAL TITANIUM B4P
EO	NATURAL CARBON/ORANGE/SILVER	VT	VIOLET
ES	NATURAL CARBON/WHITE/CELESTE BIANCHI	6I	WHITE MANTA

SPORT

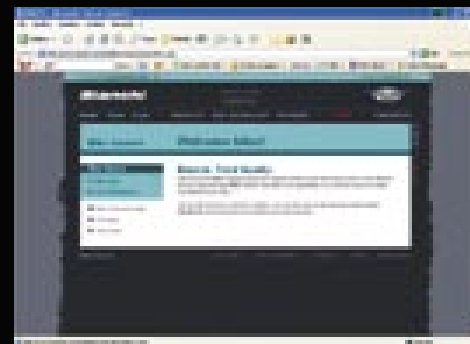
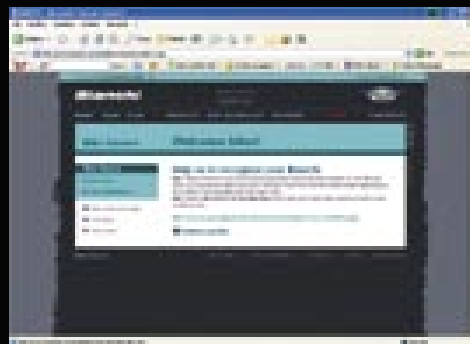
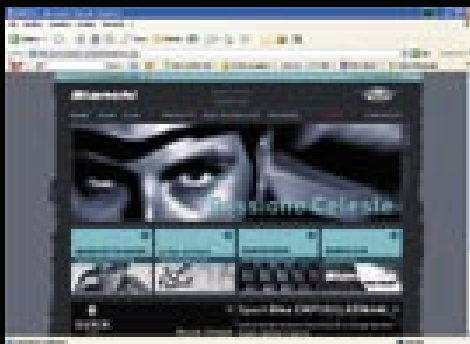


CK	CELESTE BIANCHI	GH	METAL GREYHOUND
CT	CELESTE BIANCHI/POLISH	KW	BLACK MAMBA MATT
ED	METAL BLACK		

BIKE TRACE



To own a Bianchi bike means to belong to a big family. With the Bike Trace project, fans and owners can count on an exclusive tool which ensures, at any time, the full traceability and identification of any Bianchi RC (Reparto Corse) bicycle. You just need to log on the www.bianchi.com website, click on the Bike Owners section and register your bicycle by filling in the Trace Form with your personal data and those of the frame. The recording of this data will make it possible to trace back the history of any bike by monitoring the history of the text and also its 'sporting life'. The **Quality Control Report** coupon, which can be found in each packaging and includes all the necessary information for the product registration, is fundamental. In the event of loss of the coupon, it is however possible to find the necessary data directly on the frame itself. The frame code is marked on the bottom bracket. This service guarantees the total traceability of the bicycle providing a precious support in case of theft and loss. **Thanks to Bike Trace your Bianchi is yours even more.**



CYPRUS

POLYS POUIMBOURIS & CO. LTD
MAKEDONITISSIS 84 ABC
STROVOLOS - NICOSIA - CYPRUS
TEL: +357 22 511171
FAX: +357 22 492024
E-MAIL: POLYSP@CYTANET.COM.CY

DENMARK

CYCLEUROPE DANMARK
BØRGE KILDEMOES CYKELFABRIK A/S
ALBANIVEJ 7 - NR. LYNDELSE
DK 5792 ÅRSLEV - DENMARK
TEL: +45 63 90 26 20
FAX: +45 63 90 26 25
E-MAIL: INFO@KILDEMOES.DK

ESTONIA

BALTI AUTOOSADE AS
MUSTAMAE TEE 18A
TALLINN 10617 - ESTONIA
TEL: +372 6 200600
FAX: +372 6 200699
E-MAIL: RAGNARS@AUTOPARTS.EE

FINLAND

CYCLEUROPE FINLAND OY
SARKATIE 1 A
01720 VANTAA - FINLAND
TEL: +358 9 849 2055
FAX: +358 9 849 20544
E-MAIL: INFO@CYCLEUROPE.FI

FRANCE

CYCLEUROPE INDUSTRIES S.A.
161, RUE GABRIEL PERI - BP 108
F-10104 ROMILLY SUR SEINE - FRANCE
TEL: +33 3 25 39 39 39
FAX: +33 3 25 39 37 55
E-MAIL: CYCLEUROPE@CYCLEUROPE.FR

GERMANY

CYCLEUROPE INDUSTRIES S.A.
161, RUE GABRIEL PERI
F-10104 ROMILLY SUR SEINE - FRANCE
TEL: +49 (0)1805 / 123-492
FAX: +49 (0)1805 / 123-493
E-MAIL: INFO@CYCLEUROPE.DE

HONG KONG

CHEUNG KEE CYCLE COMPANY
NO 1B. G/F. FUK YIP BUILDING
NO 12. KIK YEUNG ROAD
YUEN LONG - N.T. HONG KONG SAR
TEL: +852 24746794 AND 24753047
FAX: +852 24494949
E-MAIL: CKCYCLE@NETVIGATOR.COM

INDONESIA

BANDUNG S.A.
J.L. INGGIT GARNASIH NO.111
BANDUNG (INDONESIA)
TEL: +62 22 5200559
E-MAIL: PROBIKE@ATTGLOBAL.NET

ISRAEL

BECIDAN CYCLES
146 AHUZA STREET
RAA' NANA - ISRAEL
TEL: +972-9-9549165
FAX: +972-9-9549165
E-MAIL: SRAM@012.NET.IL

ITALY

CYCLEUROPE ITALIA SRL
VIA DELLE BATTAGLIE, 5
24047 TREVIGLIO (BG) - ITALY
TEL: +39 0363 3161
FAX: +39 0363 303680
E-MAIL: CYCLEUROPE@CYCLEUROPE.IT

JAPAN

CYCLEUROPE JAPAN CO. LTD.
KAIKA BLDG. 2F-7-1 2 CHOME SOTOKANDA
CHiyODA-KU, TOKYO 101-0021
TEL: +81 (03) 3255 2431
FAX: +81 (03) 3255 2737
E-MAIL: INFO@CYCLEUROPE.CO.JP

KOREA

DAEJIN INTERNATIONAL
431-1 MANCHON-DONG
SUSEONG-GU
706-020 DAEGU
TEL: +82-53-751-2216
FAX: +82-53-751-2239
E-MAIL: INFO.BIANCHI@YAHOO.CO.KR

MALTA

MAGRİ CYCLES & SPARES
148 B 155, EUCHARISTIC CONGRESS ROAD
MST/07 MOSTA - MALTA
TEL: +356 21 414399
FAX: +356 21 436377
E-MAIL: MAGRICY@NEXTGEN.NET.MT

THE NETHERLANDS

CYCLEUROPE INDUSTRIES SA
MARSTEDEN 29
NL 7547 TE ENSCHEDE - THE NETHERLANDS
TEL: +31 53 4280818
FAX: +31 53 4280820
E-MAIL: INFO@CYCLEUROPE.NL

NEW CALEDONIA

CYCAL SARL
6 RUE DE TOURVILLE
QUARTIER LATIN BP 585
98845 NOUMEA CEDEX - N. CALEDONIE
TEL: +687 276624
FAX: +687 259896
E-MAIL: CYCAL@LAGOON.NC

NORWAY

CYCLEUROPE NORGE AS
P.O. BOX 385
N-4303 SANDNES - NORWAY
TEL: +47 51 67 45 00
FAX: +47 51 67 57 22
E-MAIL: INFO@DBS.NO

POLAND

DEL SPORT SP. Z O.O.
UL SYROKOMLI 16
03-335 WARSZAWA - POLAND
TEL: +4822 811 01 02
FAX: +4822 674 41 72
E-MAIL: DELSPORT@DELSPORT.COM.PL

PORTUGAL

VIEIRA GRACA & CA LDA
LARGO DO TEATRO, 37
2200-032 ALFERRAREDE ABRANTES - PORTUGAL
TEL/FAX: +351 2 41 371902
E-MAIL: VGRACA.ARMAGEM@SAPO.PT

SINGAPORE

KIAN HONG CYCLE PLE LTD
3 KAKI BUKIT ROAD 1, B1-05 EUNOS
TECHNOLINK - SINGAPORE 415935
TEL: +65 67495787
FAX: +65 67495789
E-MAIL: SMIEK@KHICYCLE.COM.SG

SLOVENIJA

SKUPINA CLAAS D.D. LJUBLJANA
ZALOŠKA CESTA 171
1000 LJUBLJANA - SLOVENIJA
TEL: +386 1 5484770
FAX: +386 1 5484781
E-MAIL: PETER.ZAVASNIK@CLAAS.SI

SOUTH AFRICA

CYCLING J&J (PTY) LTD
169 MEERLUST STREET
WILLOW GLEN - SOUTH AFRICA
TEL: +27 (0)121 807 5570
FAX: +27 (0)121 807 4267
E-MAIL: INFO@JCYCLING.CO.ZA

SPAIN

CONTORN S.L.
C/JOSEPH ESTIVILL 64-68 BJ
08027 BARCELONA - SPAIN
TEL: (34) 93 209 03 44
FAX: (34) 93 209 08 67
E-MAIL: CONTORN@CONTORN.COM

SWEDEN

CYCLEUROPE SVERIGE AB
BIRGER SVENSSONS VÄG 28
S 43282 VARBERG - SVERIGE
TEL: +46 (0)340 860 00
FAX: +46 (0)340 896 72
E-MAIL: INFO@CYCLEUROPE.SE

SWITZERLAND / LIECHTENSTEIN

ECCSA SA.
VIA TESSERETE, 67
CH-6942 SAVOSA - SWITZERLAND
TEL: +41 91 260 17 17
FAX: +41 91 260 17 18
E-MAIL: CENTROBIANCHI@BIANCHI-SCHWEIZ.CH

TAIWAN

FIRST FLAG ENTERPRISE CO. LTD
N°1 LANE 311 KUANG-FU ROAD
TAICHUNG CITY, 407
TAIWAN
TEL: +886 436020688
FAX: +886 436020389
E-MAIL: FIRSTFLAG@SEED.NET.TW

THAILAND

UWC LTD. [TCA]
3656/35-36, 11TH FLOOR GREEN TOWER,
RAMA 4 RD., KLONGTOEY
BANGKOK 10110 - THAILAND
TEL: +66 2 367 3470
FAX: +66 2 367 3482 AND +66 2 367 3243
E-MAIL: KANATERUNWAVE.NET

UKRAINE

MPK LTD
GEROEVS STALINGRADA STR.,156-A
DNEPROPETROVSK 49057, UKRAINE
TEL: +38 0567 885858
E-MAIL: VELO@MPK.COM.UA

UNITED KINGDOM

CYCLEUROPE UK LTD - BIANCHI DIVISION
21-23 MILL STREET
MK 40 3EU BEDFORD - GREAT BRITAIN
TEL: +44 1 234245929
FAX: +44 1 234270562
E-MAIL: BIANCHI.UK@CYCLEUROPE.COM

UNITED STATES OF AMERICA

BIANCHI USA INC.
21325A CABOT BOULEVARD
HAYWARD, CALIFORNIA 94545 USA
TEL: +1 510 264 1001
FAX: +1 510 856 0338
E-MAIL: INFO@BIANCHIUSA.COM

BIANCHI E. F.I.V. S.P.A. > VIA DELLE BATTAGLIE, 5 > IT-24047 TREVIGLIO (BG) > TEL +39 0363 3161 > FAX +39 0363 316201 > BIANCHI@BIANCHI.COM > WWW.BIANCHI.COM

